

# DAVANT



Built on Relationships

## PRODUCT GUIDE



RAINWATER

DAVANT Rainwater



WASTE WATER

DAVANT Wastewater



DRAINAGE

DAVANT Drainage  
**magnoplast**



COLD WATER TANKS

DAVANT



PLASTIC PLUMBING SYSTEM

DAVANT Whitespeed

DAVANT CRF



CARBERY OIL TANKS

DAVANT CARBERY PLASTICS



AGRICULTURE

DAVANT Agriculture

# DRAINAGE & PLUMBING 2023



# WELCOME

Welcome to the DAVANT BLACK & WHITE PRODUCT GUIDE

Speak to our sales office or your member of our external sales team. (See the back of the book for contact details of the external sales team).

Davant will complete your order delivery within 5 working days of you placing it with us.

Here's to a successful 2023 for you and ourselves!

Each product has four price points, these are our 'M' or merchant list. The more you spend, the more you save!

All prices subject to VAT

Davant celebrates 34 years of trading this year and we thank you for all of your support throughout this time and particularly during such a challenging last 36 months.

## EXTRUSIONS – A SUCCESS STORY IN 2022...!!!

What do DAVANT think that we know.....?

- Damages to EXTRUSIONS are at an unacceptable level on CARRIER
- Customers prefer to receive deliveries on the DAVANT fleet not CARRIERS
- EXTRUSIONS are a product line that a MERCHANT needs to buy at the correct pricing whenever possible.

In a genuine endeavour to both improve service to our customers and to provide you with an 'edge' then DAVANT introduced a small stillage approach in 2022. This was to allow us to deliver on an own transport basis but also keenly priced to make you competitive.

This calls for our customers to purchase in a multiple number of extrusions to achieve the best price. If you need more than the number of lengths in a stillage, but cannot make the second multiple quantity, then we will supply the remaining lengths at the same price but not necessarily on the same delivery.

We will, of course, still make available the minimum packed quantity per extrusion, as well, but at a higher price.

The illustration below is how the pricing works within this catalogue :-

### 2023 Extrusion Pricing Structure...How It Works!



1. GUTTER 4M	W	B	MP	MS	
CODE	RVHRG4	PACK QTY	MS QTY	MP £	MS £
		6	60		
Please advise on colour					

Your price for purchasing in standard pack quantities. Per length.

**MP** - Merchant Pack Price

**MS** - Merchant Stillage Price

**110mm pipe available in stillages of 30..**

# SECTION 1

## contents

### RAINWATER

- 04 Developments
- 06 Half Round Gutter & Fittings
- 07 Squareline Gutter & Fittings
- 08 Round Downpipe & Fittings
- 09 Round Fittings and Drain Guard
- 10 Square Downpipe & Fittings
- 11 Square Fittings & Eaves Protectors
- 12 Deep Flow Gutter & Fittings
- 13 Commerical Gutter & Fittings
- 14 Rise & Fall Accessories

### WASTE WATER

- 15 Rubber Lined Clamps
- 16 Solvent Weld Waste Pipe & Fittings
- 18 Developments
- 20 Pushfit Wastepipe & Fittings
- 21 Pushfit Waste Fittings
- 23 Mechanical Waste Fittings
- 25 Pipesnug & Fluesnug
- 26 Pan Connectors
- 28 Overflow Solvent Weld Pipe & Fitting
- 29 Condensulate & Accessories

### DRAINAGE

- 32 Soil Solvent Weld Pipe & Fittings
- 36 Soil Ring Seal Pipe & Fittings
- 42 Magna Plast Underground Pipe & Fittings
- 44 Underground Pipe + Fittings (Including slotted pipe)
- 49 DEKS
- 50 MDPE Coils And Fittings

## contents

# SECTION 2

### PLASTIC PLUMBING SYSTEM

- 60 Cold Water Tanks
- 68 Whitespeed Pipe & Fittings
- 73 Whitespeed Technical Data
- 76 GPF Pipe (Grey Pushfit System & Fittings)
- 81 GPF Technical Data

### OIL TANKS

- 84 Carbery Oil Tanks
- 88 Fuel Caddies
- 89 Mobi Pionts

### AGRICULTURE

- 90 Rain Water Collection
- 93 Coal Bunkers
- 94 Bund Stores
- 95 Ad Blue
- 96 Roto Composter

### TERMS & CONTACTS

- 101 Credit Application Form
- 102 Conditions Of Sale
- 103 UK Sales Map

## Transport Fleet 2023

**At Linthwaite we have professional drivers who are all Driver CPC trained and have a huge amount of experience within the Transport industry.**

**The current fleet consists of 7 Commercial Vehicles and drivers that are dedicated to providing an excellent "on time "and "in full" service to our customers all over the United Kingdom. We have 5 Articulated vehicles, 3 7.5 ton Rigid and 2 vans.**

**Our fleet enables us to deliver into every major Town or City at least twice weekly, providing a flexible service to our customers from the Small Merchant to Large Distribution Centres**

**Alongside our dedicated fleet we operate a handful of 3rd party hauliers who facilitate our Irish Freight and work alongside a Pallet Network that looks after small palletised freight throughout the UK and Europe.**





## Moving forward in 2023

The last few years have seen significant barriers to the provision of the good service levels to which DAVANT aspire.

Raw material shortages; increased shipping costs; distribution cost increments, and political upheavals have all contributed to supply shortages and all industries have been affected.

DAVANT is no exception.

However, DAVANT is also a business which is 'built on relationships' and we are here to support the Independent plumbers 'and builders' merchant trade(s).

Therefore, over the last 12 months, we have continued to make investments to repatriate the manufacturing of drainage fittings to complement our existing UK based extrusions business.

You will be aware that we have been manufacturing PVC extrusions such as soil, underground and waste pipe for several years.

However, 2021 & 2022 have now seen in excess of £2m of investment into tooling and machinery for injection moulding fittings.

We have started slowly and have been supplying into the industry for the last year. Feedback from our customers has been extremely positive!

2023 is all about moving quickly and expanding our UK offering as soon as we can.

We call our UK manufactured range of fittings... MONARCH...!!... and upon which we hold EN1329 (soil and waste) and EN1401 (underground).

## EXCITING TIMES SO WATCH THIS SPACE

**D.R. MERRICK**  
Group Managing Director



## British Standards LINTHWAITE Lmc DAVANT gti direct



**ISO - 9001-2015 Quality Management System Certified**

**BS - EN 5615 Insulation Jackets Certified**

**BS - EN 1401-1 Underground Pipe 110mm, Area UD, SN8 Rated Certified**  
**BS - EN 1401-1 Underground Fittings 110mm, Area UD, SN8 Rated Pending**

**BS - EN 1329-1 Soil Pipe 110mm, Area BD, SN8 Rated Certified**  
**BS - EN 1329-1 Fittings 110mm, Area BD, SN8 Rated Pending**  
**BS - EN 1329-1 Fittings 32,40mm, Area BD, SN8 Rated Pending (Imminent)**

## Environmental

**ISO 14001 Environmental Management System Implementation & Certification. Pending**

**Targets and plans in place to reduce waste with a clear goal of becoming a Net Zero Company Pending**

**Zero to landfill site through Burn To Energy waste management system. Certified**

**Zero Waste on PVC-U, all internal and external non conforming or start up material re-granulated Implemented (Ongoing)**

**Actively reducing Cardboard packaging by using internal re-usable tote boxes. Implemented (Ongoing)**

**Working closely with our plastic supplier's on increasing recycled content by not only the mandatory 30% in 2022 but significantly higher. Pending**

**Reducing energy consumption by using energy saving lighting, heating and sensors. Ongoing**

**Recycling of packaging waste including Wood, Cardboard, Paper, plastic, shrink-wrap, ink cartridges Implemented (Ongoing)**

# Amazon Rainguard

## 112mm Half Round System

**DAVANT** Rainwater

AVAILABLE IN THE FOLLOWING COLOURS



### 1. GUTTER 4M W B G BR AG

**CODE**

RWHRG4

Please advise on colour

**PACK QTY**

6

**MS QTY**

60



### 2. ANGLE 90° W B G BR AG

**CODE**

RWHRA90

Please advise on colour

**PACK QTY**

20



### 3. ANGLE 135° W B G BR AG

**CODE**

RWHRA135

Please advise on colour

**PACK QTY**

20



### 4. STOP END EXTERNAL W B G BR AG

**CODE**

RWHRSEE

Please advise on colour

**PACK QTY**

100



### 5. STOP END INTERNAL W B G BR AG

**CODE**

RWHRSEI

Please advise on colour

**PACK QTY**

100



### 6. FASCIA BRACKET W B G BR AG

**CODE**

RWHRFB

Please advise on colour

**PACK QTY**

100



### 7. RUNNING OUTLET W B G BR AG

**CODE**

RWHRRO

Please advise on colour

**PACK QTY**

20



### 8. STOP END OUTLET W B BR AG

**CODE**

RWHRSEO

Please advise on colour

**PACK QTY**

20



### 9. UNION BRACKET W B G BR AG

**CODE**

RWHRUB

Please advise on colour

**PACK QTY**

30

# Amazon Rainguard 112mm Square Line System

AVAILABLE IN THE FOLLOWING COLOURS



**DAVANT** Rainwater

RAINWATER

## 1. GUTTER 4M W B BR AG

**CODE**  
RWSLG4

**PACK QTY**  
6

Please advise on colour



## 2. ANGLE 90° W B BR AG

**CODE**  
RWSLA90

**PACK QTY**  
20

Please advise on colour



## 3. ANGLE 135° W B BR AG

**CODE**  
RWSLA135

**PACK QTY**  
20

Please advise on colour



## 4. STOP END EXTERNAL W B BR AG

**CODE**  
RWSLSEE

**PACK QTY**  
100

Please advise on colour



## 5. STOP END INTERNAL W B BR AG

**CODE**  
RWSLSEI

**PACK QTY**  
100

Please advise on colour



## 6. FASCIA BRACKET W B BR AG

**CODE**  
RWSLFB

**PACK QTY**  
100

Please advise on colour



## 7. RUNNING OUTLET W B BR AG

**CODE**  
RWSLRO

**PACK QTY**  
20

Please advise on colour



## 8. STOP END OUTLET W B BR

**CODE**  
RWSLSEO

**PACK QTY**  
20

Please advise on colour



## 9. UNION BRACKET W B BR AG

**CODE**  
RWSLUB

**PACK QTY**  
30

Please advise on colour



# Amazon Rainguard

## 68mm Round System

AVAILABLE IN THE FOLLOWING COLOURS



**DAVANT** Rainwater

### Including Anthracite Grey



#### 1. PIPE 2.5m/4.0m/5.5m W B G AG BR

CODE	PACK QTY	MS QTY
RWRP2.5 <input type="checkbox"/>	6	60
RWRP4 <input type="checkbox"/>	6	60
RWRP5.5 <input type="checkbox"/>	6	60

Please advise on colour



#### 2. OFFSET BEND 112° W B G AG BR

CODE	PACK QTY
RWROB <input type="checkbox"/>	30

Please advise on colour



#### 3. BEND 90° W B G AG BR

CODE	PACK QTY
RWRB <input type="checkbox"/>	30

Please advise on colour



#### 4. SHOE W B G AG BR

CODE	PACK QTY
RWRS <input type="checkbox"/>	30

Please advise on colour



# Amazon Rainguard 68mm Round System

**DAVANT** Rainwater

AVAILABLE IN THE FOLLOWING COLOURS



## 1. DOWN PIPE CLIP W B G AG BR

**CODE**

RWRPC

Please advise on colour

**PACK QTY**

100



## 2. PIPE SOCKET W B G AG BR

**CODE**

RWRPS

Please advise on colour

**PACK QTY**

50



## 3. 112° BRANCH W B G AG BR

**CODE**

RWRBR

Please advise on colour

**PACK QTY**

20



## 4. HOPPER W B G AG BR

**CODE**

RWRHH

Please advise on colour

**PACK QTY**

10



## Leaf Protection

### 5. DRAIN GUARD

**CODE**

CONDDC

**PACK QTY**

5



RAINWATER

# Amazon Rainguard 65mm Square System

AVAILABLE IN THE FOLLOWING COLOURS



**DAVANT** Rainwater



## 1. PIPE 2.5m/4.0m/5.5m W B AG BR

CODE	PACK QTY	MS QTY
RWSP2.5 <input type="checkbox"/>	6	60
RWSP4 <input type="checkbox"/>	6	60
RWSP5.5 <input type="checkbox"/>	6	60

Please advise on colour



## 2. OFFSET BEND 112° W B AG BR

CODE	PACK QTY
RWSOB <input type="checkbox"/>	30

Please advise on colour



## 3. BEND 90° W B AG BR

CODE	PACK QTY
RWSB <input type="checkbox"/>	30

Please advise on colour



## 4. SHOE W B AG BR

CODE	PACK QTY
RWSS <input type="checkbox"/>	30

Please advise on colour

**ANTHRACITE GUTTER AVAILABLE**

# Amazon Rainguard 65mm Square System

**DAVANT** Rainwater

AVAILABLE IN THE FOLLOWING COLOURS



RAINWATER

## 1. DOWN PIPE CLIP W B AG BR

**CODE**

RWSPC

Please advise on colour

**PACK QTY**

100



## 2. SQUARE FLUSH DOWN PIPE CLIP W B AG BR

**CODE**

RWSFPC

Please advise on colour

**PACK QTY**

100



## 3. PIPE SOCKET W B AG BR

**CODE**

RWSPS

Please advise on colour

**PACK QTY**

50



## 4. 112° BRANCH W B AG BR

**CODE**

RWSBR

Please advise on colour

**PACK QTY**

20



## 5. SQUARE TO ROUND DOWNPIPE ADAPTOR W B BR

**CODE**

RWSA

Please advise on colour

**PACK QTY**

40



## 6. SQUARE TO ROUND GUTTER ADAPTOR W B AG BR

**CODE**

RWGA

Please advise on colour

**PACK QTY**

40



## Eaves Protectors

### 1. ROOFLINE TRIMS EAVE PROTECTORS 1.5 MTRS

**CODE**

FRTEPW

**PACK QTY**

10



# Amazon Rainguard

## Deep Flow

DAVANT Rainwater

AVAILABLE IN THE FOLLOWING COLOURS



## Amazon Rainguard DEEP FLOW

### Including Anthracite Grey



#### 1. GUTTER 4M 115mm Wide x 75mm Deep W B AG

CODE  
RWDFG4 ■ **DEEP FLOW**  
■ Please advise on colour

PACK QTY  
6



#### 2. ANGLE 90° W B AG

CODE  
RWDFA90 ■ **DEEP FLOW**  
■ Please advise on colour

PACK QTY  
10



#### 3. ANGLE 135° W B AG

CODE  
RWDFA135 ■ **DEEP FLOW**  
■ Please advise on colour

PACK QTY  
10



#### 4. STOP END EXTERNAL W B AG

CODE  
RWDFSEE ■ **DEEP FLOW**  
■ Please advise on colour

PACK QTY  
100



#### 5. STOP END INTERNAL W B AG

CODE  
RWDFSEI ■ **DEEP FLOW**  
■ Please advise on colour

PACK QTY  
100



#### 6. FASCIA BRACKET W B AG

CODE  
RWDFFB ■ **DEEP FLOW**  
■ Please advise on colour

PACK QTY  
100



#### 7. RUNNING OUTLET W B AG

CODE  
RWDFRO ■ **DEEP FLOW**  
■ Please advise on colour

PACK QTY  
10



#### 8. UNION BRACKET W B AG

CODE  
RWDFUB ■ **DEEP FLOW**  
■ Please advise on colour

PACK QTY  
30

# Amazon Rainguard Commercial 170mm Gutter

**DAVANT** Rainwater

AVAILABLE IN THE FOLLOWING COLOURS



## Industry Leading Capacity

Superdeep 170 has an independently tested market leading flow rate of 4.3L per second

RAINWATER

### 1. GUTTER 4M **B** **G**

CODE

RWCDCG4

PACK QTY

4

Please advise on colour



### 2. RAINWATER COMMERCIAL DEEP GUTTER 90° ANGLE EXTERNAL **B** **G**

CODE

RWCDEA90 External

PACK QTY

5

Please advise on colour



### 3. RAINWATER COMMERCIAL DEEP GUTTER 90° ANGLE INTERNAL **B** **G**

CODE

RWCDA90 Internal

PACK QTY

5

Please advise on colour



### 4. STOP END EXTERNAL **B** **G**

CODE

RWCDSEE

PACK QTY

8

Please advise on colour



### 5. STOP END INTERNAL **B** **G**

CODE

RWCDSEI

PACK QTY

10

Please advise on colour



### 6. FASCIA BRACKET **B** **G**

CODE

RWCDFB

PACK QTY

25

Please advise on colour



### 7. RUNNING OUTLET **B** **G**

CODE

RWCDRO

PACK QTY

4

Please advise on colour



### 8. UNION BRACKET **B** **G**

CODE

RWCDUB

PACK QTY

12

Please advise on colour



### 9. SUPERDEEP HOPPER 200mm x 280mm x 160mm **B** **G**

CODE

RWCDH

PACK QTY

10

Please advise on colour



# Amazon Rainguard

## Commercial 170mm Gutter

### Rise and Fall Accessories \*No wingnuts - nut & bolt only

#### 1. SQUARE RISE & FALL BRACKET

**CODE**  
RWRFB

**PACK QTY**  
10

#### 2. ROUND RISE & FALL BRACKET

**CODE**  
RWRFB

**PACK QTY**  
10

#### 3. UNIVERSAL RISE & FALL BRACKET

**CODE**  
RWURFB

**PACK QTY**  
10

#### 4. TOP HUNG BRACKET

**CODE**  
RWTRB4

**PACK QTY**  
10

#### 5. SIDE HUNG BRACKET

**CODE**  
RWSRB4

**PACK QTY**  
10



	Half Round	Square	DeepFlow	Ogee	SuperDeep170
<b>Floplast</b>	Yes	Squareline	Hi-Cap	No	Xtraflo
<b>Brett Martin</b>	Roundstyle	Squarestyle	Deepstyle	No	No Equivalent
<b>Osmia</b>	Roundline	No	Deepline	No	No Equivalent
<b>Polypipe</b>	Yes	Yes	Polyflo	No	No Equivalent
<b>Hunter</b>	Yes	Squareflo	125	No	No Equivalent
<b>Marshall Tufflex</b>	Yes	Yes	Universal XL	No	Xstream (now withdrawn)
<b>Marley</b>	Yes	No	Deepflow	No	No Equivalent

## Amazon Rainguard Rainwater System Compatibility Guide

Please use the information below for guidance only when connecting Amazon Rainguard to an existing system.

Variations in tolerance may be possible between different manufactured rainwater systems. This may affect the ease and compatibility between systems during pairing. Adjustments may be required.

Do not mix systems on a single installation.

# Rubber Lined Clamps + Back plates

## Clamps

### 1. Rubber Lined Clamp

CODE	Description	Model
PC1519	Rubber Lined Clamp 15mm (15-19mm) 3/4"	RLB01
PC2025	Rubber Lined Clamp 22mm (20-25mm) 1/2"	RLB02
PC2630	Rubber Lined Clamp 28mm (26-30mm) 3/4"	RLB03
PC3236	Rubber Lined Clamp 35mm (32-36mm) 1"	RLB04
PC3843	Rubber Lined Clamp 42mm (38-43mm) 1 1/4"	RLB05
PC4751	Rubber Lined Clamp 48mm (47-51mm) 1 1/2"	RLB06
PC5358	Rubber Lined Clamp 54mm (53-58mm)	RLB07
PC6064	Rubber Lined Clamp 60mm (60-64mm) 2"	RLB08
PC6872	Rubber Lined Clamp 68mm (68-72mm)	RLB09
PC7580	Rubber Lined Clamp 76mm (75-80mm) 2 1/2"	RLB10
PC8186	Rubber Lined Clamp 80mm (81-86mm)	RLB11
PC8792	Rubber Lined Clamp 90mm (87-92mm) 3"	RLB12
PC99105	Rubber Lined Clamp 100mm (99-105mm)	RLB13
PC107112	Rubber Lined Clamp 108mm (107-112mm)	RLB14
PC113119	Rubber Lined Clamp (113-119mm) 4"	RLB15
PC125130	Rubber Lined Clamp (125-130mm)	RLB16
PC132137	Rubber Lined Clamp (132-137mm)	RLB17



### 2. Steel Backplates

CODE	Description	Model
PCBPF	M10BZP Steel Backplates Female	RLB127
PCBPM	M10BZP Steel Backplates Male	RLB128



### 3. Steel Studs

CODE	Description	Model
PCS1025	M10 x 25mm BZP Steel Studs	TS01
PCS1030	M10 x 30mm BZP Steel Studs	TS02
PCS1040	M10 x 40mm BZP Steel Studs	TS03
PCS1050	M10 x 50mm BZP Steel Studs	TS04
PCS1060	M10 x 60mm BZP Steel Studs	TS05
PCS101000	M10 x 1mtr BZP Steel Studs	TS19



**110mm pipe available in  
stillages of 30..**



# Wastewater UPVC

## Solvent Waste System

**DAVANT** Wastewater



AVAILABLE IN THE FOLLOWING COLOURS

**PLEASE REFER TO PAGE 15 FOR CLAMPS**



Recommended storage conditions for Davant solvent waste pipe. Please see page 19



### 1. PIPE 3m WB B G

CODE	Size	Qty	MS QTY
👑 PW3L32	32mm	10	140
👑 PW3L40	40mm	10	100
👑 PW3L50	50mm	5	40

☐ Please advise on colour

### 2. 92½° SWEPT BENDS WB B G

CODE	Size	Box/Pack Qty
👑 PWSB32	32mm	300 (10)
👑 PWSB40	40mm	200 (10)
PWSB50	50mm	140 (10)

☐ Please advise on colour



### 3. 90° KNUCKLE BENDS WB B G

CODE	Size	Box/Pack Qty
👑 PWE9032	32mm	300 (10)
👑 PWE9040	40mm	200 (10)
PWE9050	50mm	140 (10)

☐ Please advise on colour



### 4. 45° OBTUSE BENDS WB B G

CODE	Size	Box/Pack Qty
👑 PWE4532	32mm	300 (10)
👑 PWE4540	40mm	250 (10)
PWE4550	50mm	160 (10)

☐ Please advise on colour



### 5. 92½° SWEPT TEES WB B G

CODE	Size	Box/Pack Qty
PWST32	32mm	200 (10)
👑 PWST40	40mm	150 (10)
PWST50	50mm	80 (10)

☐ Please advise on colour



### 6. 90° SPIGOT BENDS WB B G

CODE	Size	Box/Pack Qty
PWCB9032	32mm	400 (10)
PWCB9040	40mm	240 (10)
PWCB9050	50mm	160 (10)

☐ Please advise on colour



### 7. 45° SPIGOT BENDS WB B G

CODE	Size	Box/Pack Qty
PWSPB4532	32mm	400 (10)
PWSPB4540	40mm	280 (10)

☐ Please advise on colour



### 8. STRAIGHT COUPLINGS WB B G

CODE	Size	Box/Pack Qty
👑 PWC32	32mm	400 (10)
👑 PWC40	40mm	250 (10)
PWC50	50mm	250 (10)

☐ Please advise on colour





# Wastewater UPVC Solvent Waste System

**DAVANT** Wastewater

AVAILABLE IN THE FOLLOWING COLOURS



## 1. SCREWED ACCESS PLUGS-INTERNAL WB B G

CODE	Size	Box/Pack Qty
PWP32I	32mm	400 (10)
PWP40I	40mm	320 (10)
PWP50I	50mm	170 (10)

Please advise on colour

(N.B. Fittings go into a Socket then onto pipe)



## 2. REDUCER WB B G

CODE	Size	Box/Pack Qty
PWR3240	40 x 32mm	300 (10)
PWR3250	50 x 32mm	400 (10)
PWR4050	50 x 40mm	400 (10)

Please advise on colour



## 3. PIPE CLIPS WB B G

CODE	Size	Box/Pack Qty
PWPC32	32mm	1000 (50)
PWPC40	40mm	1000 (50)
PWPC50	50mm	1000 (50)

Please advise on colour



## 4. BLACK SWAN PVC CEMENT (Clear)

CODE	Size	Box/Pack Qty
PWBS118GS	Small 1/4 Pint/118ml	24 (1)
PWBS236GS	Large 1/2 Pint/236ml	24 (1)



## 5. BLACK SWAN CLEANING FLUID

CODE	Size	Box/Pack Qty
PWBSC118	Small 1/4 Pint/118ml	24 (1)
PWBSC236	Large 1/2 Pint/236ml	24 (1)



## 6. UNIVERSAL AIR ADMITTANCE VALVE

CODE	Size	Box/Pack Qty
SSW0056	32mm/40mm/50mm	48 (1)
SSB0056	32mm/40mm/50mm	48 (1)
SSLG0056	32mm/40mm/50mm	48 (1)



## Kitemark™ Certificate

This is to certify that: **Linthwaite Limited**  
 T/A Davant  
 Units 9-11  
 Lower Road Trading Estate  
 Near Ledbury  
 Herefordshire  
 HR8 2DJ  
 United Kingdom

Holds Certificate Number: **KM 723218**

In respect of:

**BS EN 1401-1**  
**Plastics piping systems for non-pressure underground drainage and sewerage - Unplasticized poly(vinyl chloride)(PVC-U)**

This issues the right and licence to use the Kitemark in accordance with the Kitemark Terms and Conditions governing the use of the Kitemark, as may be updated from time to time by BSI Assurance UK Ltd (the "Conditions"). All defined terms in this Certificate shall have the same meaning as in the Conditions.

The use of the Kitemark is authorized in respect of the Product(s) detailed on this Certificate provided at or from the above address.

For and on behalf of BSI: **Shahm Barhom, Group Product Certification Director**

First Issued: 2020-11-16  
 Latest Issue: 2022-09-14

Effective Date: 2022-09-14  
 Expiry Date: 2024-04-03

Page: 1 of 2



This certificate has been issued by and remains the property of BSI Assurance UK Ltd, Kitemark Court, Davy Avenue, Knowlhill, Milton Keynes MK5 8PP, United Kingdom and should be returned immediately upon request. To check its validity telephone +44 (0) 345 080 9000. An electronic certificate can be authenticated [online](#).

BSI Assurance UK Limited, registered in England under number 7805321 at 389 Chiswick High Road, London W4 4AL, UK. A member of BSI Group of Companies.

**We continue to achieve more certification on our UK manufactured underground drainage pipe.**

**Davant is proud to bring to the market our BS: EN1401 underground pipe in plain end / single socket / perforated + slotted variations.**

### Kitemark™ Certificate

No. KM 723218

**BS EN 1401-1:2019 – Plastic piping systems non-pressure underground drainage and sewerage – Unplasticized poly (vinyl chloride) (PVC-U)**

The scope of this certificate covers the following products:

#### Pipes

Description	Size mm	SN rating	SDR rating
Single ring seal socket pipe	110mm	8	34
Plain ended pipe	110mm	8	34

Note: Pipes shown above are application area UD

First Issued: 2020-11-16  
 Latest Issue: 2022-09-14

Effective Date: 2022-09-14  
 Expiry Date: 2024-04-03

Page: 2 of 2

This certificate has been issued by and remains the property of BSI Assurance UK Ltd, Kitemark Court, Davy Avenue, Knowlhill, Milton Keynes MK5 8PP, United Kingdom and should be returned immediately upon request. To check its validity telephone +44 (0) 345 080 9000. An electronic certificate can be authenticated [online](#).

BSI Assurance UK Limited, registered in England under number 7805321 at 389 Chiswick High Road, London W4 4AL, UK. A member of BSI Group of Companies.

## WASTEWATER UPVC SOLVENT WASTE SYSTEM

### BENEFITS

Manufactured from UPVC, a strong, durable and BSEN 1566-1:2000 shatter proof material, the Davant Wastewater UPVC solvent weld waste system comes in three sizes: 32mm, 40mm and 50mm and three colour alternatives: White Bright, Black, Olive Grey.

The range, which meets the requirements of BS5255 & BSEN 1329-1:2000 and fully conforms to the highest European standards, offers a comprehensive selection of waste fittings to meet virtually every requirement. Easy to handle and simple to fit, the Davant Wastewater range offers the installer and specifier the best of both worlds - a high specification, top quality product at a price to match anything on the market.

The Company is continually developing its range of plumbing plastics under the Davant Wastewater Brand. This currently comprises a push-fit pipe and fittings system in addition to this launch of a waste system. Other well-established Davant plumbing products include pipe insulation, glass wool loft insulation, hot and cold water tank jackets and cold water storage cisterns.

For further information on Davant Wastewater or any of our products, ring our Sales Hotline on 01531 630068

Waste pipe available in 3m.

Available in White Bright, Grey and Black

Manufactured in high quality, UPVC  
Stronger, heavier duty fittings than market alternatives  
Complies with latest European standards: fittings to EN1329-1; pipe to EN1566-1 & BS5255:1989 Waste pipe withstands temperatures up to 70°C  
Extremely competitive prices

OG



B



WB



OG

WB

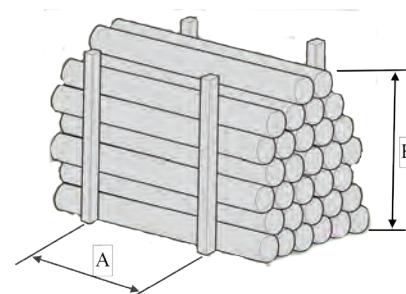
B

THESE SYMBOLS INDICATE COLOUR AVAILABILITY

### Recommended Storage Condition for DAVANT Solvent Waste Pipe.

In order to prevent DAVANT'S Solvent Waste Pipe from age bowing the following storage conditions are recommended:

- Avoid storage under direct sunlight
- Avoid storing in hot / cold ambient conditions
- Fully supported storage is recommended
  - o See diagram attached
    - § Dimension A = 1 metre centres between supports
    - § Dimension B
      - v For 32mm SWP no more than 7 Packs of 10 lengths of pipe high
      - v For 40mm SWP no more than 6 Packs of 10 lengths of pipe high
      - v For 50mm SWP no more than 4 Packs of 10 lengths of pipe high
- Do not store under stress (i.e.) un-supported over a pivot point



# Wastewater

## Pushfit Waste System

AVAILABLE IN THE FOLLOWING COLOURS



**PLEASE REFER TO PAGE 15 FOR CLAMPS**

**DAVANT** Wastewater



### 1. WASTE PIPE 3m LENGTHS W B G

CODE	Size	Pack Qty	MS QTY
EP02	32mm	(10)	150
EP05	40mm	(10)	100

Please advise on colour



### 2. KNUCKLE BEND W B G

CODE	Size	Box/Pack Qty
EP07	32mm	240 (10)
EP08	40mm	180 (10)

Please advise on colour



### 3. SWEPT BEND W B G

CODE	Size	Box/Pack Qty
EP09	32mm	200 (10)
EP10	40mm	100 (10)

Please advise on colour



### 4. STRAIGHT COUPLER W B G

CODE	Size	Box/Pack Qty
EP11	32mm	350 (10)
EP12	40mm	270 (10)

Please advise on colour



### 5. SWEPT TEE W B G

CODE	Size	Box/Pack Qty
EP13	32mm	140 (10)
EP14	40mm	90 (10)

Please advise on colour



### 6. REDUCER W B G

CODE	Size	Box/Pack Qty
EP15	40/32mm	400 (10)

Please advise on colour

AVAILABLE IN THE FOLLOWING COLOURS



**DAVANT** Wastewater

## 1. 45° OBTUSE BEND W B G

CODE	Size	Box/Pack Qty
EP16 <input type="checkbox"/>	32mm	300 (10)
EP17 <input type="checkbox"/>	40mm	200 (10)

Please advise on colour



## 2. 90° SWIVEL BEND W B G

CODE	Size	Box/Pack Qty
EP22 <input type="checkbox"/>	32mm	250 (10)
EP23 <input type="checkbox"/>	40mm	180 (10)

Please advise on colour



## 3. SOCKET PLUG W B G

CODE	Size	Box/Pack Qty
EP26 <input type="checkbox"/>	32mm	700 (10)
EP27 <input type="checkbox"/>	40mm	400 (10)

Please advise on colour



## 4. PIPE CLIP W B G

CODE	Size	Box/Pack Qty
PWPC32 <input type="checkbox"/>	32mm	1000 (50)
PWPC40 <input type="checkbox"/>	40mm	1000 (50)

Please advise on colour



## 5. SCREWED ACCESS PLUG-INTERNAL FITTING W B G

CODE	Size	Box/Pack Qty
EP32 <input type="checkbox"/>	32mm	100 (10)
EP33 <input type="checkbox"/>	40mm	100 (10)

Please advise on colour



## 6. TANK CONNECTOR W B G

CODE	Size	Box/Pack Qty
EP35 <input type="checkbox"/>	32mm	100 (10)
EP36 <input type="checkbox"/>	40mm	100 (10)

Please advise on colour



WASTE WATER

# Wastewater

## Pushfit Waste System

**DAVANT** Wastewater

### WASTEWATER PUSHFIT WASTE SYSTEM

#### BENEFITS

Manufactured from polypropylene, a strong extremely durable and shatter proof material, the polypropylene mechanical system comes in two sizes: 32mm and 40mm and White, Grey and Black in colour.

The range accepts pipe compliant with EN1566-1 & BS5255:1989. Davant Wastewater fully conforms to the highest European standards, offers a comprehensive selection of waste fittings to meet virtually every requirement. Easy to handle and simple to fit, the Davant Wastewater range offers the installer and specifier the best of both worlds - a high specification, top quality product at a price to match anything on the market.

The Company is continually developing its range of plumbing plastics under the Davant Wastewater Brand. This currently comprises a push-fit pipe and fittings waste system in addition to this a solvent pipe and fittings waste system. Other well-established Davant plumbing products include pipe insulation, glass wool loft insulation, hot and cold water tank jackets and cold water storage cisterns.

For further information on Davant Wastewater or any of our products, ring our Sales Hotline on 01531 630068

G



B



W



G

W

B

THESE SYMBOLS INDICATE COLOUR AVAILABILITY

# Wastewater Mechanical Waste System

**DAVANT** Wastewater

EW Codes can be boxed for quantities of 100+

## 1. STRAIGHT CONNECTOR

CODE	Size	Box/Pack Qty
EW01W	32mm	100 (10)
EW02W	40mm	100 (10)

Product supplied loose & needs to be assembled



## 2. 90° BEND (KNUCKLE)

CODE	Size	Box/Pack Qty
EW03W	32mm	100 (10)
EW04W	40mm	100 (10)

Product supplied loose & needs to be assembled



## 3. 45° BEND (OBTUSE)

CODE	Size	Box/Pack Qty
EW05W	32mm	100 (10)
EW06W	40mm	100 (10)

Product supplied loose & needs to be assembled



## 4. SWEPT TEE

CODE	Size	Box/Pack Qty
EW07W	32mm	100 (10)
EW08W	40mm	100 (10)

Product supplied loose & needs to be assembled



## 5. REDUCER

CODE	Size	Box/Pack Qty
EW09W	32mm	100 (10)

Product supplied loose & needs to be assembled





## 6. SWIVEL ELBOW

CODE	Size	Box/Pack Qty
EW10W	32mm	100 (10)
EW11W	40mm	100 (10)

Product supplied loose & needs to be assembled



## 7. PIPE CLIPS

CODE	Size	Box/Pack Qty
 PWPC32WB	32mm	1000 (50)
 PWPC40WB	40mm	1000 (50)



# Wastewater

## Mechanical Waste System

**DAVANT** Wastewater

### **DAVANT WASTEWATER MECHANICAL WASTE SYSTEM**

Manufactured from polypropylene, a strong extremely durable and shatter proof material, the Davant Wastewater polypropylene mechanical system comes in two sizes: 32mm and 40mm and White in colour. The range is pipe compliant with Davant WasteWater EN1566-1. Davant Wastewater fully conforms to the highest European standards, and offers a comprehensive selection of waste fittings to meet virtually every requirement.

Easy to handle and simple to fit, the Davant Wastewater range offers the installer and specifier the best of both worlds - a high specification, top quality product at a price to match anything on the market.

The Company is continually developing its range of plumbing plastics under the Davant Wastewater Brand. This currently comprises a push-fit pipe and fittings waste system in addition to this a solvent pipe and fittings waste system.

Other well-established Davant plumbing products include pipe insulation, glass wool loft insulation, hot and cold water tank jackets and cold water storage cisterns.

For further information on Davant Wastewater or any of our products, ring our Sales Hotline on 01531 630068



THESE SYMBOLS INDICATE COLOUR AVAILABILITY



Item No.	Item Description	BARCODE
PS110BKSF	PIPESNUG 110mm 4" Black - single	5060521910122
PS110GYSF	PIPESNUG 110mm 4" Grey - single	5060521910146
PS110OGYSF	PIPESNUG 110mm 4" Olive Grey - single	5060521910214
PS110WHSF	PIPESNUG 110mm 4" White - single	5060521910139
PS32BK2PKSF	PIPESNUG 32mm Black - Solvent Weld Waste - 2 pack	5060521910160
PS32GY2PKSF	PIPESNUG 32mm Grey - Solvent Weld Waste - 2 pack	5060521910177
PS32WH2PKSF	PIPESNUG 32mm White - Solvent Weld Waste - 2 pack	5060521910153
PS40BK2PKSF	PIPESNUG 40mm Black - Solvent Weld Waste - 2 pack	5060521910191
PS40GY2PKSF	PIPESNUG 40mm Grey - Solvent Weld Waste - 2 pack	5060521910207
PS40WH2PKSF	PIPESNUG 40mm White - Solvent Weld Waste - 2 pack	5060521910184



Starter Packs	Item Description	BARCODE
PSSP1	Starter Pack 1 - White/Black/Olive Grey - 32mm & 40mm (5 of each)	5019001037118
PSSP2	Starter Pack 2 - White 32mm & 40mm (15 of each)	5019001037125
PSSP3	Starter Pack 3 - Black 32mm & 40mm (15 of each)	5019001037132

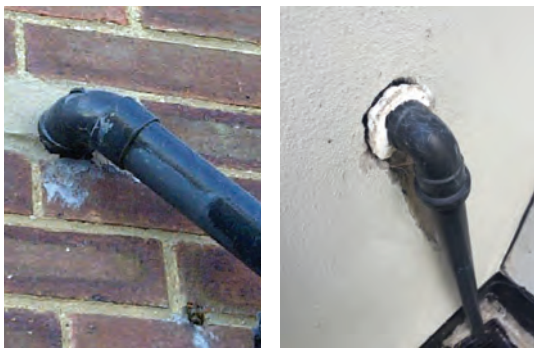
Refills	Item Description	BARCODE
PS32BK5PK	PIPESNUG 32mm Black - Solvent Weld Waste - 5 pack	5019001037149
PS32OGY5PK	PIPESNUG 32mm Olive Grey - Solvent Weld Waste - 5 pack	5019001037156
PS32WH5PK	PIPESNUG 32mm White - Solvent Weld Waste - 5 pack	5019001037163
PS40BK5PK	PIPESNUG 40mm Black - Solvent Weld Waste - 5 pack	5019001037170
PS40OGY5PK	PIPESNUG 40mm Olive Grey - Solvent Weld Waste - 5 pack	5019001037187
PS40WH5PK	PIPESNUG 40mm White - Solvent Weld Waste - 5 pack	5019001037194



Flue Snug	Item Description	BARCODE
PSFLUEBK	FLUESNUG 100mm Black - Single	5060521910221
PSFLUEWH	FLUESNUG 100mm White - Single	5060521910238

## Proposed changes to Part L of Building Regulations

**Aim:** to improve the build quality by drastically increasing air tightness of the fabric of the building



Existing methods to seal a hole are inconsistent and can crack and fall out time, invalidating the air tightness

New regulations state all incoming service penetrations and internal services must:

- Be installed through neatly core-drilled holes to limit damage
- Not be sealed with mortar or silicone
- Be properly sealed with an airtight collar or grommet



## Multiple sizes and applications



## Pan Connectors



### 1.4" PAN CONNECTOR SPIGOT STRAIGHT

CODE	Size	Box/PackQty
EPWCSTRV	4"	45 (1)



### 2.4" PAN CONNECTOR SPIGOT 14 DEG

CODE	Size	Box/PackQty
EPWC14V	4"	45 (1)



### 3.4" PAN CONNECTOR OFFSET (20mm)

CODE	Size	Box/PackQty
EPWCOFFV	4"	45 (1)



### 4.4" PAN CONNECTOR EXTREME OFFSET (40mm)

CODE	Size	Box/PackQty
EPWCOFFEXTV	4"	45 (1)



### 5.4" PAN CONNECTOR EXTENSION

CODE	Size	Box/PackQty
EPWCEXTV	4"	30 (1)



### 6.4" PAN CONNECTOR SPIGOT FLEXI MINI (200mm - 350mm)

CODE	Size	Box/PackQty
EPWCFLEXMINIV	4"	15 (1)



### 7.4" PAN CONNECTOR SPIGOT FLEXI MEDIUM (240mm - 500mm)

CODE	Size	Box/PackQty
EPWCFLEXMEDV	4"	15 (1)

## Pan Connectors

### 8. 4" PAN CONNECTOR SPIGOT FLEXI LONG (300mm - 700mm)

CODE	Size	Box/Pack Qty
EPWCFLEXLONGV	4"	15 (1)



### 9. 4" PAN CONNECTOR 90 DEG

CODE	Size	Box/Pack Qty
EPWC90V	4"	25 (1)



### 10. 4" PAN CONNECTOR 90 DEG WITH BOSS

CODE	Size	Box/Pack Qty
EPWC90BOSSV	4"	25 (1)



### 11. 4" PAN CONNECTOR 90 DEG SWAN NECK

CODE	Size	Box/Pack Qty
EPWC90SWANV	4"	18 (1)



### 12. 4" PAN CONNECTOR 90 DEG FLEXI WITH EYE

CODE	Size	Box/Pack Qty
EPWC90EYEV	4"	16 (1)



### 13. 4" PAN CONNECTOR SPIGOT FLEXI 90 DEG

CODE	Size	Box/Pack Qty
EPWCFLEXV	4"	16 (1)



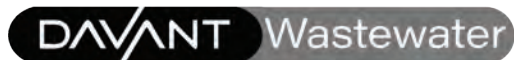
# Wastewater UPVC

## Overflow Solvent Weld Pipe & Fittings

AVAILABLE IN THE FOLLOWING COLOURS



**PLEASE REFER TO PAGE 15 FOR CLAMPS**



### NOW AVAILABLE IN BLACK

#### 1. WHITE OVERFLOW PIPE 3m W B



CODE	Size	Qty	MS QTY
EOS02	21.5mm	10	100
Please advise on colour			

#### 2. TANK CONNECTOR W B



CODE	Size	Qty
EOS08	21.5mm	10
Please advise on colour		

#### 3. BENT TANK CONNECTOR W B



CODE	Size	Qty
EOS09	21.5mm	10
Please advise on colour		

#### 4. STRAIGHT COUPLER W B



CODE	Size	Box/Pack Qty
EOS04	21.5mm	1000 (50)
Please advise on colour		

#### 5. TEE W B



CODE	Size	Box/Pack Qty
EOS07	21.5mm	360 (50)
Please advise on colour		

#### 6. 135° SWEPT BEND (OBTUSE BEND) W B



CODE	Size	Box/Pack Qty
EOS06	21.5mm	800 (50)
Please advise on colour		

#### 7. 90° KNUCKLE BEND W B



CODE	Size	Box/Pack Qty
EOS05	21.5mm	750 (50)
Please advise on colour		

#### 8. SOLVENT REDUCER/ADAPTER (PLASTIC) W B



CODE	Size	Box/Pack Qty
EOS10	32mm	300 (10)
EOS11	40mm	300 (10)
Please advise on colour		

#### 9. WASTE TO OVERFLOW PUSHFIT ADAPTER (RUBBER)



CODE	Size	Box/Pack Qty
EO10	32mm	100 (10)
EO11	40mm	100 (10)

#### 10. BULLDOG CLIP (POLYPROPYLENE)



CODE	Size	Pack Qty
KDBD22	22mm	100

# CONDENSULATE XTREME



## PACK 1.

Code	Size	Qty
CONDX002	3 Linear metres	1

3 linear metres of Condensulate Xtreme, 1 x 21.5mm - 20mm straight connector  
1 x 20mm hose end, 1 x 32mm x 21.5mm rubber reducer  
1 x Drain Guard, 1 x Instruction card

## PACK 2.

Code	Size	Qty
CONDX003	10 Linear metres	1

10 linear metres of Condensulate Xtreme, 3 x 21.5mm - 20mm straight connector  
3 x 20mm hose end, 3 x 32mm x 21.5mm rubber reducer  
1 x Instruction card, 1 x 32mm x 21.5mm Rubber Reducer

## DRAIN GUARD

Code	Pack Qty
CONDDC	5

### FITTINGS PACK

Code	Qty
CONDFT1	1

3 x 21.5mm - 20mm straight connector  
3 x 20mm hose end

### FITTINGS PACK

Code	Qty
CONDFT2	1

3 x 32mm Reducers/ adaptor

### FITTINGS PACK

Code	Qty
CONDFT3	1

3 x 40mm Reducer/ adaptor

## KEY BENEFITS OF CONDENSULATE XTREME

- Easy to install - includes adaptors
- Fully integrated, insulated and flexible pipe
- Not vulnerable to UV degradation, vandalism or vermin when sleeved in waste pipe
- An innovative cost effective solution
- Aesthetically pleasing
- No electrical or mechanical parts
- Sleeved in any 40mm waste pipe
- Supplied in both 3 metre and 10 metre trade packs
- Does not freeze at -10°
- BS 5864-2010 Compliant

# CONDENSULATE STANDARD



## PACK 1.

Code	Size	Qty
COND002	3 Linear metres	1

3 linear metres of Condensulate Standard, 1 x 21.5mm - 20mm straight connector  
1 x 20mm hose end, 1 x 32mm x 21.5mm reducer, 1 x Drain Guard

## PACK 2.

Code	Size	Qty
COND001	10 Linear metres	1

10 linear metres of Condensulate Standard, 3 x 21.5mm - 20mm straight connector  
3 x 20mm hose end 3 x 32mm x 21.5mm reducer, 1 x Instruction card

### FITTINGS PACK

Code	Qty
CONDFT1	1

3 x 21.5mm - 20mm straight connector  
3 x 20mm hose end

### FITTINGS PACK

Code	Qty
CONDFT2	1

3 x 32mm Reducers/ adaptor

### FITTINGS PACK

Code	Qty
CONDFT3	1

3 x 40mm Reducer/ adaptor

## KEY BENEFITS OF CONDENSULATE STANDARD

- Easy to install - includes adaptors
- Fully integrated, insulated and flexible pipe
- Not vulnerable to UV degradation, vandalism or vermin when sleeved in waste pipe
- An innovative cost effective solution
- Aesthetically pleasing
- No electrical or mechanical parts
- Sleeved in any 32mm waste pipe
- Supplied in both 3 metre and 10 metre trade packs
- Does not freeze at -5°

# CONDENSULATE XTREME

## IMPORTANT NOTICE

---

GUIDANCE UPDATE TO BRITISH STANDARDS, (BS6798, MAY 2014)  
ENDORSED BY BUILDING REGULATIONS AND HHIC (HEATING  
& HOT WATER INDUSTRY COUNCIL)

## CONDENSATE DRAINAGE PIPE INSULATION

### BACKGROUND

During recent winters the UK has experienced prolonged spells of extremely cold weather – down to minus 20°C and below in many areas. This has resulted in a significant increase in the number of calls to boiler manufacturers and heating engineers from householders with condensing (high efficiency) boilers where the condensate drainage pipe has frozen and become blocked with ice, causing the boiler to shut down. In the vast majority of cases such problems occur where the condensate drainage pipe is located externally to the building for some part of its length.

In view of the possibility that UK weather patterns will show more “extremes” in future, due to the effects of global climate, the following guidance updates previous recommendations on condensate drainage pipe installation.

### REVISED GUIDANCE ON CONDENSULATE PIPE INSTALLATION (EXTERNAL)

- The external pipe should be insulated using suitable waterproof and weatherproof insulation (Class O” pipe insulation is suitable for this purpose).
- Internal condensate drainage pipes run in unheated areas such as lofts, basements and garages should be treated as external pipe.

### CONDENSULATE XTREME

Condensulate Xtreme is a specially designed insulated pipe which prevents the condensate pipe from freezing.

It is made from a unique insulation material called “Aerogel” which is ultra thin and high performance. The material will not allow Condensate to freeze at -10°C and will help protect from freezing down at -20°C

### WHAT ARE THE BENEFITS:-

- Fully integrated insulated flexible pipe
- Blends in with existing building plastics
- No exposed unsightly insulation (Housed inside building plastics)
- Safe from UV and Vermin degradation
- No electrical or mechanical parts
- Fit and Forget
- Currently utilised on the majority of British Gas external condensate pipe installations

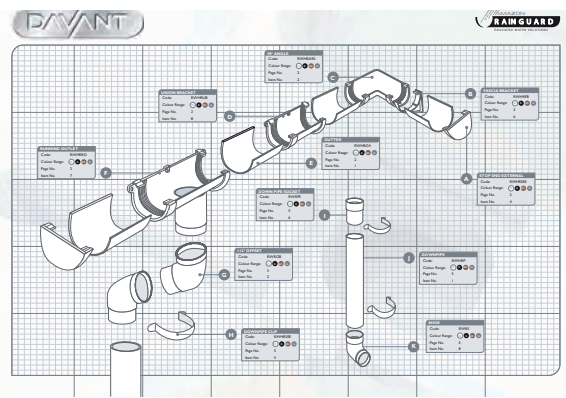
# Point of Sale Support

Request your FREE P.O.S with the office on your next order



2000x600mm Vinyl Oil Tank Banners

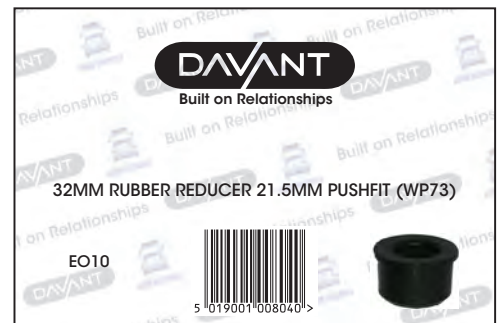
A1 Technical Poster



A2 Foamex Display Boards



Warehouse Labels Available to download from [www.davant.co.uk](http://www.davant.co.uk)



Pipe Snug Point of Sale Counter Top Box



WASTE WATER

# SOIL SOLVENT WELD PIPE & FITTINGS

Solvent Above Ground Soil and Vent 110mm



PLEASE REFER TO PAGE 15 FOR CLAMPS



AVAILABLE IN THE FOLLOWING COLOURS



PVC-U (OLIVE GREY, LIGHT GREY, WHITE & BLACK):  
EN-1566-1 (PIPE) EN-1329-1 (FITTINGS)

## PIPE



### 1. DAVANT PLAIN END PIPE B LG OG W

CODE	Size	Qty	MS QTY
SS 0001	3m	2	30

Please advise on colour

110MM pipe available in minimum quantity of 2. Also available in full stillage of 60 or half stillage of 30. Relevant pricing applicable.

## BENDS



### 2. 92° DOUBLE SOCKET BEND B OG W

CODE	Size	Box/Pack Qty
SS 0003	110mm	18 (1)

Please advise on colour



### 3. 135° DOUBLE SOCKET BEND B OG W

CODE	Size	Box/Pack Qty
SS 0007	110mm	20 (1)

Please advise on colour



### 4. 92° SINGLE SOCKET BEND B OG W

CODE	Size	Box/Pack Qty
SS 0004	110mm	18 (1)

Please advise on colour



### 5. 135° SINGLE SOCKET BEND B OG W

CODE	Size	Box/Pack Qty
SS 0008	110mm	30 (1)

Please advise on colour



### 6. 92° DOUBLE SOCKET ACCESS BEND B OG W

CODE	Size	Box/Pack Qty
SS 0005	110mm	18 (1)

Please advise on colour



### 7. 92° SINGLE SOCKET ACCESS BEND B OG W

CODE	Size	Box/Pack Qty
SS 0006	110mm	18 (1)

Please advise on colour



# SOIL SOLVENT WELD PIPE & FITTINGS

## Solvent Above Ground Soil and Vent 110mm

AVAILABLE IN THE FOLLOWING COLOURS



PVC-U (OLIVE GREY, BLACK & White):  
EN-1566-1 (PIPE) EN-1329-1 (FITTINGS)



## BRANCHES

### 1. 92° TRIPLE SOCKET BRANCH (WITH BOSS) B OG W

CODE	Size	Box/Pack Qty
SS <span style="background-color: grey; color: white; border: 1px solid grey; padding: 0 2px;">  </span> 0009	110mm	11 (1)

   Please advise on colour



### 2. 92° DOUBLE SOCKET BRANCH (WITH BOSS) B OG W

CODE	Size	Box/Pack Qty
SS <span style="background-color: grey; color: white; border: 1px solid grey; padding: 0 2px;">  </span> 0010	110mm	11 (1)

   Please advise on colour



### 3. 92° DOUBLE SOCKET ACCESS BRANCH B OG W

CODE	Size	Box/Pack Qty
SS <span style="background-color: grey; color: white; border: 1px solid grey; padding: 0 2px;">  </span> 0012	110mm	9 (1)

   Please advise on colour



### 4. 92° TRIPLE SOCKET ACCESS BRANCH B OG W

CODE	Size	Box/Pack Qty
SS <span style="background-color: grey; color: white; border: 1px solid grey; padding: 0 2px;">  </span> 0011	110mm	9 (1)

   Please advise on colour



### 5. 135° DOUBLE SOCKET BRANCH B OG W

CODE	Size	Box/Pack Qty
SS <span style="background-color: grey; color: white; border: 1px solid grey; padding: 0 2px;">  </span> 0014	110mm	12 (1)

   Please advise on colour



### 6. 135° TRIPLE SOCKET BRANCH B OG W

CODE	Size	Box/Pack Qty
SS <span style="background-color: grey; color: white; border: 1px solid grey; padding: 0 2px;">  </span> 0013	110mm	12 (1)

   Please advise on colour



### 7. 110mm PIPE SNUG B OG W

CODE	Size	Each
PS110 <span style="background-color: grey; color: white; border: 1px solid grey; padding: 0 2px;">  </span> SF	110mm	1

Please refer to Page 25 for product code



DON'T FORGET YOUR PIPE SNUG. QUICKER, CHEAPER AND CLEANER THAN ANY OTHER METHOD OF SEALING A HOLE WHERE A PIPE EXITS THE WALL



# SOIL SOLVENT WELD PIPE & FITTINGS

## Solvent Above Ground Soil and Vent 110mm



AVAILABLE IN THE FOLLOWING COLOURS



PVC-U (OLIVE GREY, BLACK & White):  
EN-1566-1 (PIPE) EN-1329-1 (FITTINGS)

## BOSS PIPES & ADAPTORS



1. SINGLE SOCKET ACCESS PIPE <b>B</b> <b>OG</b> <b>W</b>		
CODE	Size	Box/Pack Qty
SS  0033	110mm	16 (1)
Please advise on colour		



2. DOUBLE SOCKET ACCESS PIPE <b>B</b> <b>OG</b> <b>W</b>		
CODE	Size	Box/Pack Qty
SS  0032	110mm	16 (1)
Please advise on colour		



3. DOUBLE SOCKET BOSS CONNECTOR <b>B</b> <b>OG</b> <b>W</b>		
CODE	Size	Box/Pack Qty
SS  0022	32mm	36 (1)
SS  0023	40mm	36 (1)
SS  0024	50mm	36 (1)
Please advise on colour		



4. DOUBLE SOCKET SHORT BOSS PIPE CONNECTOR <b>B</b> <b>OG</b> <b>W</b>		
CODE	Size	Box/Pack Qty
SS  0025	110x63mm	10 (1)
Please advise on colour		



5. DOUBLE SOCKET COUPLER <b>B</b> <b>OG</b> <b>W</b>		
CODE	Size	Box/Pack Qty
SS  0018	110mm	33 (1)
Please advise on colour		



6. DOUBLE SOCKET SLIP COUPLER <b>B</b> <b>OG</b> <b>W</b>		
CODE	Size	Box/Pack Qty
SS  0019	110mm	33 (1)
Please advise on colour		

# SOIL SOLVENT WELD PIPE & FITTINGS

## Solvent Above Ground Soil and Vent 110mm

AVAILABLE IN THE FOLLOWING COLOURS



PVC-U (OLIVE GREY, WHITE & BLACK):  
EN-1566-1 (PIPE) EN-1329-1 (FITTINGS)

## CAPS & TERMINALS

### 7. SCREWED ACCESS CAP SPIGOT TAIL (Spigot) **B** **OG** **W**

CODE	Size	Qty
SS 0017	110mm	75 (1)

Please advise on colour



### 8. VENT TERMINAL **B** **OG** **W**

CODE	Size	Qty
SS 0020	110mm	165 (1)

Please advise on colour



### 9. WEATHER COLLAR **B** **OG** **W**

CODE	Size	Qty
SS PS110	110mm	10 (1)

Please advise on colour



### 10. STRAP BOSS OPEN C/W NUT & BOLT **B** **OG** **W**

CODE	Size	Qty
SS 0031	110x63mm	100 (1)

Please advise on colour



### 11. STRAP BOSS OPEN Side Fix **B** **OG** **W**

CODE	Size	Qty
SS 0031SC	110x63mm	100 (1)

Please advise on colour



### 12. REDUCER SOCKET SPIGOT **B** **OG** **W**

CODE	Size	Qty
SS 0015	110x50mm	120 (1)
SS 0016	110x82mm	120 (1)

Please advise on colour



### 13. PIPE CLIPS PIPE SUPPORT BRACKETS **B** **OG** **W**

CODE	Size	Qty
SS 0026	110mm	100 (1)

Please advise on colour



### 14. SOIL TO WASTE ADAPTOR **B** **LG**

CODE	Size	Pack
SSRW	110mm	10 (1)

Please advise on colour



### 15. SOIL TO RW ADAPTOR **B** **W**

CODE	Size	Pack
SP 0046	110mm	10 (1)

Please advise on colour



# SOIL RING SEAL PIPE & FITTINGS

Above Ground Soil and Vent 110mm



AVAILABLE IN THE FOLLOWING COLOURS



PVC-U (WHITE, OLIVE GREY, LIGHT GREY & BLACK):  
EN-1566-1 (PIPE) EN-1329-1 (FITTINGS)

**PLEASE REFER TO PAGE 15 FOR CLAMPS**

110MM pipe available in minimum quantity of 2. Also available in full stillage of 60 or half stillage of 30. Relevant pricing applicable.

## PIPES

### 1. DAVANT PLAIN END PIPE B LG OG W



CODE	Size	Qty	MS QTY
SS 0001	3m	2	30

Please advise on colour

### 2. DAVANT SINGLE SOCKET PIPE B LG W



CODE	Size	Qty	MS QTY
SP 0001	3m	2	30

Please advise on colour

### 3. DAVANT SINGLE SOCKET PIPE B LG W



CODE	Size	Qty	MS QTY
SP 0040	4m	2	30

Please advise on colour

## COUPLERS



### 1. DOUBLE SOCKET COUPLER B LG W

CODE	Size	Box/Pack Qty
SP 0018	110mm	33 (1)

Please advise on colour



### 2. DOUBLE SOCKET SLIP COUPLER B LG W

CODE	Size	Box/Pack Qty
SP 0019	110mm	33 (1)

Please advise on colour



### 3. SINGLE SOCKET PF/SOLVENT COUPLER B LG W

CODE	Size	Box/Pack Qty
SP 0034	110mm	36 (1)

Please advise on colour

## CLIPS



### 1. PIPE CLIPS PIPE SUPPORT BRACKETS B LG W

CODE	Size	Box/Pack Qty
SS 0026	110mm	100 (1)

Please advise on colour

# SOIL RING SEAL PIPE & FITTINGS

## Above Ground Soil and Vent 110mm



PVC-U (WHITE, LIGHT GREY & BLACK):  
EN-1566-1 (PIPE) EN-1329-1 (FITTINGS)

### BENDS

#### 1. 92° SINGLE SOCKET BEND **B** **LG** **W**

CODE	Size	Box/Pack Qty
SP 0004	110mm	18 (1)

Please advise on colour



#### 2. 92° DOUBLE SOCKET BEND **B** **LG** **W**

CODE	Size	Box/Pack Qty
SP 0003	110mm	18 (1)

Please advise on colour



#### 3. 135° SINGLE SOCKET BEND **B** **LG** **W**

CODE	Size	Qty
SP 0008	110mm	20

Please advise on colour



#### 4. 135° DOUBLE SOCKET BEND **B** **LG** **W**

CODE	Size	Box/Pack Qty
SP 0007	110mm	20 (1)

Please advise on colour



#### 5. 92° SINGLE SOCKET ACCESS BEND **B** **LG** **W**

CODE	Size	Qty
SP 0006	110mm	14

Please advise on colour



#### 6. 92° DOUBLE SOCKET ACCESS BEND **B** **LG** **W**

CODE	Size	Qty
SP 0005	110mm	14

Please advise on colour



#### 7. 135° DOUBLE SOCKET BEND (One Socket Ring Seal/One Socket Solvent) **B** **LG** **W**

CODE	Size	Box/Pack Qty
SP 0035	110mm	30 (1)

Please advise on colour



#### 8. ADJUSTABLE BEND 90° **B** **LG**

CODE	Size	Qty
SP 0020	110mm	16

Please advise on colour



# SOIL RING SEAL PIPE & FITTINGS

Above Ground Soil and Vent 110mm



AVAILABLE IN THE FOLLOWING COLOURS



PVC-U (WHITE, LIGHT GREY & BLACK):  
EN-1566-1 (PIPE) EN-1329-1 (FITTINGS)

DON'T FORGET YOUR PIPE SNUG. QUICKER, CHEAPER AND CLEANER THAN ANY OTHER METHOD OF SEALING A HOLE WHERE A PIPE EXITS THE WALL



## BRANCHES



### 1. 92° DOUBLE SOCKET BRANCH (WITH BOSS) B LG W

CODE	Size	Qty
SP 0010 <span style="color: red;">Please advise on colour</span>	110mm	11



### 2. 135° DOUBLE SOCKET BRANCH B LG W

CODE	Size	Qty
SP 0014 <span style="color: red;">Please advise on colour</span>	110mm	9



### 3. 92° TRIPLE SOCKET BRANCH (WITH BOSS) B LG W

CODE	Size	Qty
SP 0009 <span style="color: red;">Please advise on colour</span>	110mm	11



### 4. 135° TRIPLE SOCKET BRANCH B LG W

CODE	Size	Qty
SP 0013 <span style="color: red;">Please advise on colour</span>	110mm	9

Please advise on colour



### 5. 92° TRIPLE SOCKET ACCESS BRANCH B LG W

CODE	Size	Qty
SP 0011 <span style="color: red;">Please advise on colour</span>	110mm	9



### 6. 92° DOUBLE SOCKET ACCESS BRANCH B LG W

CODE	Size	Qty
SP 0012 <span style="color: red;">Please advise on colour</span>	110mm	9

# SOIL RING SEAL PIPE & FITTINGS

## Above Ground Soil and Vent 110mm

AVAILABLE IN THE FOLLOWING COLOURS



PVC-U (WHITE, LIGHT GREY & BLACK):  
EN-1566-1 (PIPE) EN-1329-1 (FITTINGS)



## BOSS PIPES & ADAPTORS

### 1. 92° SINGLE SOCKET ACCESS PIPE **B LG W**

CODE	Size	Box/Pack Qty
SP 0033	110mm	16 (1)

Please advise on colour



### 2. DOUBLE SOCKET ACCESS PIPE **B LG W**

CODE	Size	Box/Pack Qty
SP 0032	110mm	12 (1)

Please advise on colour



### 3. SINGLE SOCKET BOSS PIPE CONNECTOR **B OG W**

CODE	Size	Box/Pack Qty
SS 0021	110mm x 63mm	20 (1)

Please advise on colour



### 4. DOUBLE SOCKET BOSS PIPE CONNECTOR **B LG W**

CODE	Size	Box/Pack Qty
SS 0022	DS 32mm	36 (1)
SS 0023	DS 40mm	36 (1)
SS 0024	DS 50mm	36 (1)

Please advise on colour



### 5. DOUBLE SOCKET SHORT BOSS PIPE CONNECTOR **B LG W**

CODE	Size	Box/Pack Qty
SS 0025	110mm x 63mm	10 (1)

Please advise on colour



### 6. INTERNAL SOIL SOLVENT BOSS ADAPTOR **B LG W**

CODE	Size	Box/Pack Qty
SS 0027	63x32mm	300 (10)
SS 0028	63x40mm	300 (10)
SS 0029	63x50mm	300 (10)

Please advise on colour



### 7. SOLVENT STRAP BOSS OPEN C/W NUT & BOLT **B LG W**

CODE	Size	Box/Pack Qty
SS 0031	110x63mm	100 (1)

Please advise on colour



### 8. STRAP BOSS OPEN Side Fix **B LG W**

CODE	Size	Box/Pack Qty
SS 0031SC	110x63mm	100 (1)

Please advise on colour



### 9. RUBBER BOSS ADAPTOR - PUSH FIT

CODE	Size	Box/Pack Qty
SSRA6332	63x32mm	10 (1)
SSRA6340	63x40mm	10 (1)
SSRA6350	63x50mm	10 (1)



DRAINAGE

# SOIL RING SEAL PIPE & FITTINGS

Above Ground Soil and Vent 110mm



AVAILABLE IN THE FOLLOWING COLOURS



PVC-U (WHITE, LIGHT GREY & BLACK):  
EN-1566-1 (PIPE) EN-1329-1 (FITTINGS)

## CAPS



### 1. SCREWED ACCESS CAP **B LG W**

CODE	Size	Pack
SP 0038	110mm	1

Please advise on colour



### 2. BLANKING PLUG **B LG W**

CODE	Size	Pack
SP 0022	110mm	1

Please advise on colour



### 3. SCREWED ACCESS CAP SPIGOT TAIL (SPIGOT) **B LG W**

CODE	Size	Pack
SS 0017	110mm	1

Please advise on colour

## TERMINALS



### 1. VENT TERMINAL **B LG W**

CODE	Size	Pack	Box Qty
SS 0020	110mm	1	65

Please advise on colour



### 2. MUSHROOM VENT COWL 110mm **B LG W**

CODE	Pack	Box Qty
SS 0050	1	36

Please advise on colour



### 3. AIR ADMITTANCE VALVE 75mm-110mm MALE **B LG W**

CODE	Pack
SS 0055	1

Please advise on colour  
For use Internally & Externally



### 4. AIR ADMITTANCE VALVE 110mm FEMALE **B LG W**

CODE	Pack
SS 0055T	1

Please advise on colour  
Internal Use Only



### 5. WEATHER COLLAR **B LG W**

CODE	Size	Pack
SS PS110	110mm Grey	1

Please advise on colour  
For use Internally & Externally



# SOIL RING SEAL PIPE & FITTINGS

## Above Ground Soil and Vent 110mm

AVAILABLE IN THE FOLLOWING COLOURS

PVC-U (WHITE, LIGHT GREY & BLACK):  
EN-1566-1 (PIPE) EN-1329-1 (FITTINGS)



### 6. ROOFING SLATE 50-170mm

CODE	Sheet Size	Box/Pack Qty
RFA50170	457x457mm	20 (1)

For use on Flat roofs and pitched roofs up to 45°



### 7. BLACK SWAN PVC Cement (Clear)

CODE	Size	Box/Pack Qty
PWBS118GS	Small 1/4 pint-118ml	24 (10)
PWBS236GS	Large 1/2 pint-236ml	24 (10)



### 8. BLACK SWAN CLEANING FLUID

CODE	Size	Box/Pack Qty
PWBSC118	Small 1/4 pint-118ml	24 (10)
PWBSC236	Large 1/2 pint-236ml	24 (10)



### 9. AEROSOL LUBRICANT

CODE	Size	Box/Pack Qty
SPUTSG300	400ml	1



DRAINAGE

## magnoplast

110MM pipe available in minimum quantity of 1. Also available in full stillage of 60 or half stillage of 30. Relevant pricing applicable.



**PLEASE REFER TO PAGE 15 FOR CLAMPS**



### 1. PIPES WITH SOCKET - CO-EXTRUDED (KGEM)

CODE	Description	Pack	Size	MS QTY
SPUT0050M	Single Socket Pipe	1	3m x 160mm	30
SPUT0051M	Single Socket Pipe	1	6m x 160mm	30

See Page 44 for 110mm Pipe



### 2. BENDS SINGLE SOCKET

CODE	Description	Size	Qty
SPUT0008M	Single Socket Bend 45°	110mm	20
SPUT0038M	Single Socket Bend 30°	110mm	20
SPUT0039M	Single Socket Bend 15°	110mm	20
SPUT0004M	Single Socket Bend 90° Knuckle	110mm	20
SPUTS0004M	Single Socket Bend 90° Slow	110mm	10
SPUT0058M	Single Socket Bend 90°	160mm	10
SPUT0059M	Single Socket Bend 45°	160mm	10
SPUT0060M	Single Socket Bend 30°	160mm	10
SPUT0061M	Single Socket Bend 15°	160mm	10



### 3. BENDS DOUBLE SOCKET

CODE	Description	Size	Qty
SPUT0003M	Double Socket Bend 90°	110mm	10
SPUT0007M	Double Socket Bend 45°	110mm	15
SPUT0036M	Double Socket Bend 30°	110mm	15
SPUT0037M	Double Socket Bend 15°	110mm	15



### 4. BRANCHES

CODE	Description	Size	Qty
SPUT0010M	Double Socket Equal Junction	110mm	10
SPUT0014M	Double Socket Equal Junction 45°	110mm	10
SPUT0066M	Double Socket Equal Junction 90°	160mm	7
SPUT0067M	Double Socket Unequal Junction 90°	160mm	10
SPUT0077M	Double Socket Equal Junction 45°	160mm	5
SPUT0076M	Double Socket Unequal Junction 45°	160mm	8



### 5. PLUGS INTERNAL

CODE	Description	Size	Qty
SPUT0043M	Blank Plugs	110mm	20
SPUT0069M	Blank Plugs	160mm	40



### 6. PLUGS EXTERNAL

CODE	Description	Size	Qty
SPUT0044M	Blank Plugs	110mm	20



**7. DOUBLE-SOCKET CONNECTORS, MOVABLE (SLEEVES) (SLIP COUPLER)**

CODE	Description	Size	Qty
SPUT0019M	Slip Couplers	110mm	20
SPUT0055M	Slip Couplers	160mm	10



**8. DOUBLE-SOCKET CONNECTOR**

CODE	Description	Size	Qty
SPUT0018M	Double Socket Couplers	110mm	20
SPUT0054M	Double Socket Couplers	160mm	10



**9. REDUCER**

CODE	Description	Size	Qty
SPUT0068M	Reducer	160 x 110mm	10



**10. ACCESS PIPES - LOCKING PLATE**

CODE	Description	Size	Qty
SPUTAPM	Access Pipe	110mm	20



**11. ACCESS PIPES - COVER WITH BOLTS**

CODE	Description	Size	Qty
SPUTAPR110M	Access Pipe Rectangular	110mm	16
SPUTAPR160M	Access Pipe Rectangular	160mm	8



**12. LUBRICANT**

CODE	Description	Size	Qty
SPUTLUB250	Lubricant	250ml	10
SPUTLUB500	Lubricant	500ml	10



# UNDERGROUND PIPE & FITTINGS

## Underground Fittings 110mm/160mm

**DAVANT** Drainage

110MM pipe available in minimum quantity of 1. Also available in full stillage of 60 or half stillage of 30. Relevant pricing applicable.

PLEASE REFER TO  
PAGE  
15 FOR CLAMPS



EN1401



### 1. DAVANT PLAIN END PIPE

CODE	Size	Pack	MS QTY
SSUT0001	3mx110mm	1	30
SSUT0002	6mx110mm	1	30
SSUT0048	3mx160mm	1	30
SSUT0049	6mx160mm	1	30

### 2. DAVANT SINGLE SOCKET PIPE

CODE	Size	Pack	MS QTY
SPUT0001	3mx110mm	1	30
SPUT0002	6mx110mm	1	30
SPUT0050M	3mx160mm	1	30
SPUT0051M	6mx160mm	1	30

### 3. DAVANT SLOTTED AND DRILLED PIPE

CODE	Description	Pack Qty	MS Qty
SPUT0002SL	110mm Single Socket Slotted Pipe x 6m	1	30
SPUT0051MSL	160mm Single Socket Slotted Pipe x 6m	1	30
SPUT0002DR	110mm Single Socket Drilled Pipe x 6m	1	30
SPUT0051MDR	160mm Single Socket Drilled Pipe x 6m	1	30
SPUT0001SL	110mm Single Socket Slotted Pipe x 3m	1	30
SPUT0050MSL	160mm Single Socket Slotted Pipe x 3m	1	30
SPUT0001DR	110mm Single Socket Drilled Pipe x 3m	1	30
SPUT0050MDR	160mm Single Socket Drilled Pipe x 3m	1	30

## BENDS

### 1. SS BEND (SINGLE SOCKET)



CODE	Size	Pack
SPUT0004	87.5°x110mm	18
SPUT0008	45°x110mm	20
SPUT0038	30°x110mm	27
SPUT0039	15°x110mm	30
SPUT0058	87.5°x160mm	5
SPUT0059	45°x160mm	6
SPUT0060	30°x160mm	6
SPUT0061	15°x160mm	6

### 2. DS BEND (DOUBLE SOCKET)



CODE	Size	Pack
SPUT0003	87.5°x110mm	18
SPUT0007	45°x110mm	20
SPUT0036	30°x110mm	25
SPUT0037	15°x110mm	25
SPUT0056	87.5°x160mm	5
SPUT0057	45°x160mm	6
SPUT0074	15°x160mm	6
SPUT0075	30°x160mm	6

### 3. ADJUSTABLE BEND 0 - 90°



CODE	Size	Pack
SPUT0011	110mm	16

### 4. REST BEND (DOUBLE SOCKET)



CODE	Size	Pack
SPUT0006	110mm	12

### 5. LONG RADIUS BENDS (PLAIN END)



CODE	Size	Pack
SSUT0046	87.5°x110mm	10
SSUT0047	45°x110mm	10

# UNDERGROUND PIPE & FITTINGS

## Underground Fittings 110mm/160mm

AVAILABLE IN THE FOLLOWING COLOURS

**DAVANT** Drainage

PVC-U (TERRACOTTA) EN 1401-1

## BRANCHES

### 1. DOUBLE SOCKET EQUAL JUNCTION WITH BOSS

CODE	Size	Pack
SPUT0010	87.5°x110mm	11
SPUT0066	87.5°x160mm	10

### 2. TRIPLE SOCKET EQUAL JUNCTION WITH BOSS

CODE	Size	Pack
SPUT0009	87.5°x110mm	11
SPUT0062	87.5°x160mm	6

### 3. DOUBLE SOCKET 45° EQUAL JUNCTION

CODE	Size	Pack
SPUT0014	45°x110mm	9
SPUT0077	45°x160mm	4

### 4. TRIPLE SOCKET 45° EQUAL JUNCTION

CODE	Size	Pack
SPUT0013	45°x110mm	9
SPUT0064	45°x160mm	5

### 5. TRIPLE SOCKET 45° UNEQUAL JUNCTION

CODE	Size	Pack
SPUT0065	(160x160x110mm)	5

### 6. DOUBLE SOCKET 87.5° UNEQUAL JUNCTION

CODE	Size	Pack
SPUT0067	87.5°x(160x160x110mm)	5

### 7. TRIPLE SOCKET UNEQUAL JUNCTION

CODE	Size	Pack
SPUT0063	87.5°x(160x160x110mm)	5

### 8. UNDERGROUND DOUBLE SOCKET 45° UNEQUAL BRANCH

CODE	Size	Pack
SPUT0076	160mm	4

## COUPLERS

### 1. DS COUPLER (DOUBLE SOCKET)

CODE	Size	Pack
SPUT0018	110mm	33
SPUT0054	160mm	12

### 2. DS SLIP COUPLER (DOUBLE SOCKET)

CODE	Size	Pack
SPUT0019	110mm	33
SPUT0055	160mm	12



# UNDERGROUND PIPE & FITTINGS

## Underground Fittings 110mm/160mm



AVAILABLE IN THE FOLLOWING COLOURS

PVC-U (TERRACOTTA) EN 1401-1

## BOTTLE GULLIES



### 1. STANDARD BOTTLE GULLY

CODE	Size	Pack
SPUT0041	110x160mm	10



### 2. BOTTLE GULLY / REAR INLET (UNCAPPED)

CODE	Size	Pack
SPUT0042	110x160x110mm	10



### 3. BOTTLE GULLY SQUARE TOP ADAPTOR

CODE	Size	Pack
SPUTBGSTA	110mm	24



### 4. BOTTLE GULLY GRIDS

CODE	Size	Pack
SPUTBGSG	110mm	24



### 5. BOTTLE GULLY RAISING PIECE

CODE	Size	Pack
SPUTBGRP	110mm	18

## BLANK/ACCESS CAPS



### 1. SOCKET PLUG

CODE	Description	Size	Qty
SPUT0043M	Blank Plugs	110mm	20
SPUT0069M	Blank Plugs	160mm	40



### 2. SCREWED ACCESS CAP

CODE	Size	Pack
SSUT0017	110mm	75



### 3. PROTECTIVE CAP

CODE	Size	Pack
SPUTCOMBI	110mm	10
SPUTCOMBI160	160mm	10

# UNDERGROUND PIPE & FITTINGS

## Underground Fittings 110mm/160mm

AVAILABLE IN THE FOLLOWING COLOURS

PVC-U (TERRACOTTA) EN 1401-1



## HOPPERS

### 1. SQUARE HOPPER

CODE	Size	Pack
SPUT0005	110mm	24



### 2. RECTANGULAR HOPPER

CODE	Size	Pack
SPUTRH110	110mm	20



### 3. SQUARE HOPPER SPIGOT OUTLET

CODE	Size	Pack
SPUT0078	110mm	10



### 4. REPLACEMENT HOPPER GRID SQUARE

CODE	Size	Pack
SPUTH	152x152mm	10



### 5. REPLACEMENT HOPPER GRID RECTANGULAR

CODE	Size	Pack
SPUTRHSG	A - 152x152mm Grid B - 152x87mm	10



## TRAPS

### 1. GULLY TRAP

CODE	Size	Pack
SPUT0020	110mm	10



### 2. SS P-TRAP SINGLE SOCKET/LOW BACK P-TRAP

CODE	Size	Pack
SPUT0040	110mm	6



## REDUCER

### 1. LEVEL INVERT REDUCER

CODE	Size	Pack
SPUT0068	160x110mm	10



# UNDERGROUND PIPE & FITTINGS

## Manhole Sewer Underground

AVAILABLE IN THE FOLLOWING COLOURS

PVC-U (TERRACOTTA) EN 1401-1

**DAVANT** Drainage

## MANHOLES



### 1. MANHOLE COVER (PLASTIC) 1.5 TONNE

CODE	Size	Pallet Qty	Qty
SPUTMC320 (110mm Height)	320mm	54	12
SPUTMC450 (110mm Height)	450mm	52	24



### 2. RAISING PIECE

CODE	Size	Pallet Qty	Qty
SPUTMR320 (140mm Height)	320mm	99	20
SPUTMR450 (230mm Height)	450mm	36	20



### 3. MANHOLE BASE

CODE	Size	Pallet Qty	Qty
SPUTMB320 (220mm Height)	320mm	56	12
SPUTMB450 (240mm Height)	450mm	32	12



### 4. 160MM CHAMBER BASE WITH 4 INLETS (2X110MM & 2X160MM)

CODE	Size	Pallet Qty	Pack
SPUTMB450/160	450mm	24	5



### 5. BLANKING CAPS FOR MANHOLE BASE

CODE	Size	Pack
SPUTMCAP	110mm	50



### 6. ROUND TO SQUARE POLYPROPYLENE COVER AND FRAME 3.5 TONNE

CODE	Size	Pallet Qty	Pack
SPUTMC320RS	320mm	54	10
SPUTMC450RS	450mm	52	10



### 7. SEALING RING

CODE	Size	Pack
SPUTMSEAL	450mm	10

We recommend the use of a sealing ring to ensure the base is air tight.



### 8. RODDING EYE

CODE	Size	Pack
SPUTRE110 (Plastic)	110mm	12



# UNDERGROUND PIPE & FITTINGS

Sewer Underground

AVAILABLE IN THE FOLLOWING COLOURS

PVC-U (TERRACOTTA) EN 1401-1



## ADAPTORS

### 1. UNIVERSAL WASTE ADAPTOR

CODE	Size	Pack
SPUTUWA324050	110mm	24



### 2. RAIN WATER ADAPTOR

CODE	Size	Pack
SPUTRWA	110mm	24



### 3. UNDERGROUND X WASTE ADAPTORS

CODE	Size	Pack
SPUTWA32	110mmx32mm	10
SPUTWA40	110mmx40mm	10
SPUTWA3240	110mmx32mmx40mm	10
SPUTWA4040	110mmx40mmx40mm	10



## DEKS

### 1. EPVC PIPE CONNECTORS

CODE	Description	Size mm
PCPVC112	Pipe Coupling 4" PVC	112-105
PCAPVC142114	DACE4000 Adaptor Coupling 4" Clay to PVC	142-132/114-105
PCPVC170	Pipe Coupling 6" PVC	170-155
PCAPVC186114	Adaptor Coupling 6" Clay to 4" PVC	186-170/114-100
PCAPVC198165	DACE6000 Adaptor Coupling 6" Clay to PVC	198-178/165-150



### 2. SMALL COUPLINGS - EPVC PLUMBING RANGE

CODE	Description	Size mm
PCPVC37	Pipe Coupling 1¼"	37-27
PCPVC45	Pipe Coupling 1½"	45-35
PCPVC61	Pipe Coupling 2"	61-50
PCPVC70	Pipe Coupling 2½"	70-55
PCPVC84	Pipe Coupling 3"	84-69
PCAPVC5737	Adaptor Coupling 2" to 1¼"	57-49/37-29
PCAPVC5744	Adaptor Coupling 2" to 1½"	57-45/44-36
PCAPVC4437	Adaptor Coupling 1½" to 1¼"	44-36/37-29
PCSBPDM137	Clay Adaptor 4" x 4"	



# MDPE COILS AND FITTINGS

## MDPE Pipe & Pipe Fittings



### DAVANT UNIVERSAL KIT & FITTINGS

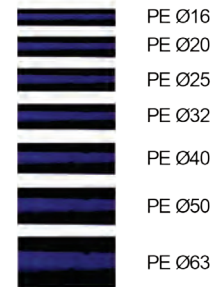
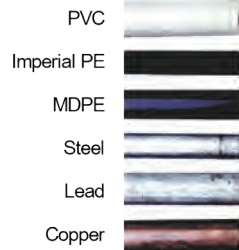
The DAVANT Universal fitting is the latest concept in Transition Fittings to connect pipes of different or the same material.

#### TOTALLY FLEXIBLE & ADAPTABLE

UNIVERSAL COMPRESSION FITTING FOR TRANSITIONS & REPAIRS ON PIPES OF ANY MATERIAL (Copper, Lead, PVC, PE, Iron, etc...) with outside diameters from 15 to 50mm.

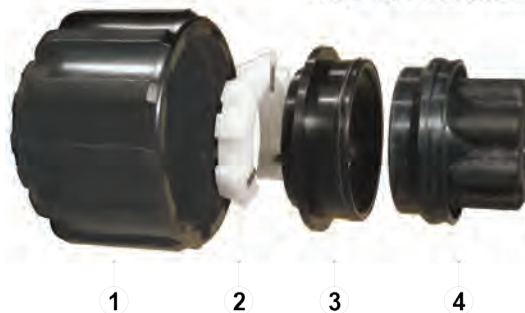


The Universal Transition



The fitting is supplied in a KIT that will fit onto any of the DAVANT range of compression fittings of the appropriate size, including the valves. This allows for a comprehensive transition in any situation. Just remove the standard Nut, Grip Ring, Pressing Ring and O Ring, and substitute with the parts shown below. Instantly a transition is made. No other adaptors are required.

**ONE KIT MAKES ANY PIPE FIT !**



1. NUT : PP Copolymer
2. GRIP RING : POM + Stainless Steel teeth
3. PRESSING RING : PP Copolymer
4. UNIVERSAL ADAPTOR : NBR

For those situations where many fittings are required in the same configuration, they can be supplied ready assembled. The DAVANT Universal Transition fitting can be supplied in **ANY COMBINATION** or in **KIT FORM** only. **A TOTALLY FLEXIBLE SOLUTION - ALWAYS.**



# MDPE COILS AND FITTINGS

## MDPE Pipe & Pipe Fittings

DAVANT Plumbing

### COILS

#### 1. MEDIUM DENSITY POLYETHYLENE (MDPE) BLUE PIPE 20mm

CODE	Size	Pack
W20MDPE25	20mm x 25m	1
W20MDPE50	20mm x 50m	1
W20MDPE100	20mm x 100m	1



#### 2. MEDIUM DENSITY POLYETHYLENE (MDPE) BLUE PIPE 25mm

CODE	Size	Pack
W25MDPE25	25mmx25m	1
W25MDPE50	25mmx50m	1
W25MDPE100	25mmx100m	1



#### 3. MEDIUM DENSITY POLYETHYLENE (MDPE) BLUE PIPE 32mm

CODE	Size	Pack
W32MDPE25	32mmx25m	1
W32MDPE50	32mmx50m	1
W32MDPE100	32mmx100m	1



#### 4. MEDIUM DENSITY POLYETHYLENE (MDPE) BLUE PIPE 50mm

CODE	Size	Pack
W50MDPE25	50mmx25m	1
W50MDPE50	50mmx50m	1
W50MDPE100	50mmx100m	1



#### 5. MEDIUM DENSITY POLYETHYLENE (MDPE) BLUE PIPE 63mm

CODE	Size	Pack
W63MDPE25	63mmx25m	1
W63MDPE50	63mmx50m	1
W63MDPE100	63mmx100m	1



### FITTINGS

#### 1. TOTAL MAINS COUPLING

CODE	Size	Box qty
MTTC16	16mm	50
MTTC20	20mm	50
MTTC25	25mm	35
MTTC32	32mm	25
MTTC40	40mm	11
MTTC50	50mm	14
MTTC63	63mm	15
MTTC75	75mm	14
MTTC90	90mm	8
MTTC110	110mm	3



DRAINAGE

# MDPE COILS AND FITTINGS

## MDPE Pipe & Pipe Fittings

**DAVANT** Plumbing

### 2. TOTAL MAINS REDUCING COUPLING



CODE	Size	Box qty
MTTRC2016	20-16mm	50
MTTRC2516	25-16mm	45
MTTRC2520	25-20mm	45
MTTRC3220	32-20mm	30
MTTRC3225	32-25mm	30
MTTRC4025	40-25mm	16
MTTRC4032	40-32mm	15
MTTRC5032	50-32mm	18
MTTRC5040	50-40mm	18
MTTRC6340	63-40mm	20
MTTRC6350	63-50mm	20
MTTRC7563	75-63mm	14
MTTRC9075	90-75mm	8
MTTRC11090	110-90mm	4

### 3. TOTAL MAINS FEMALE ADAPTORS



CODE	Size	Pack
MTTFA1612	16mm - 1/2"	86
MTTFA1634	16mm - 3/4"	86
MTTFA2012	20mm - 1/2"	90
MTTFA2034	20mm - 3/4"	86
MTTFA2512	25mm - 1/2"	60
MTTFA2534	25mm - 3/4"	60
MTTFA251	25mm - 1"	56
MTTFA3212	32mm - 1/2"	35
MTTFA3234	32mm - 3/4"	35
MTTFA321	32mm - 1"	35
MTTFA32114	32mm - 1 1/4"	35
MTTFA401	40mm - 1"	22
MTTFA40112	40mm - 1 1/2"	22
MTTFA50112	50mm - 1 1/2"	25
MTTFA632	63mm - 2"	26
MTTFA752	75mm - 2"	20
MTTFA75212	75mm - 2 1/2"	20
MTTFA903	90mm - 3"	12
MTTFA1104	110mm - 4"	6

# MDPE COILS AND FITTINGS

## MDPE Pipe & Pipe Fittings

**DAVANT** Plumbing

### 4. TOTAL MAINS MALE ADAPTORS

CODE	Size	Box qty
MTTMA1612	16mm - 1/2"	90
MTTMA1634	16mm - 3/4"	90
MTTMA2012	20mm - 1/2"	90
MTTMA2034	20mm - 3/4"	86
MTTMA2512	25mm - 1/2"	60
MTTMA2534	25mm - 3/4"	60
MTTMA251	25mm - 1"	56
MTTMA3234	32mm - 3/4"	40
MTTMA321	32mm - 1"	40
MTTMA32114	32mm - 1&1/4"	40
MTTMA4034	40mm - 3/4"	22
MTTMA401	40mm - 1"	22
MTTMA40114	40mm - 1&1/4"	22
MTTMA40112	40mm - 1&1/2"	22
MTTMA50114	50mm - 1&1/4"	27
MTTMA50112	50mm - 1&1/2"	27
MTTMA502	50mm - 2"	25
MTTMA63112	63mm - 1&1/2"	30
MTTMA632	63mm - 2"	30
MTTMA63212	63mm - 2&1/2"	30
MTTMA752	75mm - 2"	18
MTTMA75212	75mm - 2&1/2"	18
MTTMA753	75mm - 3"	18
MTTMA903	90mm - 3"	12
MTTMA1104	110mm - 4"	6



### 5. TOTAL MAINS END CAP

CODE	Size	Box qty
MTTEC16	16mm	120
MTTEC20	20mm	120
MTTEC25	25mm	70
MTTEC32	32mm	50
MTTEC40	40mm	24
MTTEC50	50mm	28
MTTEC63	63mm	30
MTTEC75	75mm	20
MTTEC90	90mm	16
MTTEC110	110mm	6



### 6. TOTAL MAINS 90 DEGREE ELBOW

CODE	Size	Box qty
MTT90E16	16mm	45
MTT90E20	20mm	45
MTT90E25	25mm	30
MTT90E32	32mm	20
MTT90E40	40mm	10
MTT90E50	50mm	12
MTT90E63	63mm	14
MTT90E75	75mm	9
MTT90E90	90mm	6
MTT90E110	110mm	3



DRAINAGE

# MDPE COILS AND FITTINGS

## MDPE Pipe & Pipe Fittings

**DAVANT** Plumbing

### 7. 90 DEGREE ELBOW THREADED MALE



CODE	Size	Box qty
MTTEM2012	20mm (1/2")	70
MTTEM2034	20mm (3/4")	70
MTTEM2512	25mm (1/2")	40
MTTEM2534	25mm (3/4")	40
MTTEM251	25mm (1")	40
MTTEM3234	32mm (3/4")	30
MTTEM321	32mm (1")	30
MTTEM32114	32mm (1 1/4")	30
MTTEM401	40mm (1")	15
MTTEM40114	40mm (1 1/4")	15
MTTEM50112	50mm (1 1/2")	18
MTTEM632	63mm (2")	20

### 8. 90 DEGREE ELBOW THREADED FEMALE



CODE	Size	Box qty
MTTEF1612	16mm (1/2")	70
MTTEF2012	20mm (1/2")	70
MTTEF2034	20mm (3/4")	70
MTTEF2512	25mm (1/2")	40
MTTEF2534	25mm - 3/4"	40
MTTEF251	25mm (1")	30
MTTEF3234	32mm (3/4")	30
MTTEF321	32mm (1")	30
MTTEF32114	32mm (1 1/4")	30
MTTEF401	40mm (1")	15
MTTEF40114	40mm (1 1/4")	15
MTTEF50112	50mm (1 1/2")	18
MTTEF632	63mm (2")	20
MTTEF75212	75mm (2 1/2")	14
MTTEF903	90mm (3")	8
MTTEF1104	110mm (4")	4

### 9. 90 DEGREE TEE



CODE	Size	Box qty
MTTT16	16mm	30
MTTT20	20mm	30
MTTT25	25mm	20
MTTT32	32mm	12
MTTT40	40mm	5
MTTT50	50mm	8
MTTT63	63mm	8
MTTT75	75mm	5
MTTT90	90mm	4
MTTT110	110mm	1

# MDPE COILS AND FITTINGS

## MDPE Pipe & Pipe Fittings

**DAVANT** Plumbing

### 10. 90 DEGREE TEE THREADED FEMALE

CODE	Size	Box qty
MTTTF1612	16mm (1/2")	40
MTTTF2012	20mm (1/2")	40
MTTTF2034	20mm (3/4")	40
MTTTF2512	25mm (1/2")	25
MTTTF2534	25mm (3/4")	25
MTTTF251	25mm (1")	25
MTTTF3234	32mm (3/4")	25
MTTTF321	32mm (1")	15
MTTTF401	40mm (1")	8
MTTTF40114	40mm (1 1/4")	8
MTTTF50112	50mm (1 1/2")	10
MTTTF632	63mm (2")	11
MTTTF75212	75mm (2 1/2")	8
MTTTF903	90mm (3")	4
MTTTF1104	110mm (4")	2



### 11. 90 DEGREE TEE THREADED MALE

CODE	Size	Box qty
MTTMM1612	16mm (1/2")	40
MTTMM2012	20mm (1/2")	40
MTTMM2034	20mm (3/4")	40
MTTMM2512	25mm (1/2")	25
MTTMM2534	25mm (3/4")	25
MTTMM251	25mm (1")	25
MTTMM3234	32mm (3/4")	15
MTTMM321	32mm (1")	15
MTTMM401	40mm (1")	9
MTTMM40114	40mm (1 1/4")	9
MTTMM50112	50mm (1 1/2")	10
MTTMM632	63mm (2")	12



### 12. TOTAL MAINS BIBTAP WALL SUPPORTS

CODE	Size	Box qty
MTTWS2012	20mm (1/2")	50
MTTWS2534	25mm (3/4")	40



### 13. TOTAL MAINS REDUCING TEE

CODE	Size	Box qty
MTTRT2520	25-20mm	20
MTTRT3225	32-25mm	12
MTTRT4025	40-25mm	8
MTTRT4032	40-32mm	8
MTTRT5032	50-32mm	8
MTTRT5040	50-40mm	8
MTTRT6350	63-50mm	8



# MDPE COILS AND FITTINGS

## MDPE Pipe & Pipe Fittings

**DAVANT** Plumbing

### 14. UNIVERSAL FITTING KIT



CODE	Size	Pack
MTGUFK15	15-22mm	1
MTGUFK21	21-27mm	1
MTGUFK27	27-35mm	1
MTGUFK35	35-50mm	1

### 15. UNI TRANS COUPLING



CODE	Size	Box Qty
MTGUTC152216	15-22mm (1/2") - 16mm	1
MTGUTC152220	15-22mm (1/2") - 20mm	1
MTGUTC152225	15-22mm (1/2") - 25mm	1
MTGUTC152232	15-22mm (1/2") - 32mm	1
MTGUTC152240	15-22mm (1/2") - 40mm	1
MTGUTC212720	21-27mm (1/2") - 20mm	1
MTGUTC212725	21-27mm (3/4") - 25mm	1
MTGUTC212732	21-27mm (3/4") - 32mm	1
MTGUTC212740	21-27mm (3/4") - 40mm	1
MTGUTC212750	21-27mm (3/4") - 50mm	1
MTGUTC273525	27-35mm (1") - 25mm	1
MTGUTC273532	27-35mm (1") - 32mm	1
MTGUTC273540	27-35mm (1") - 40mm	1
MTGUTC273550	27-35mm (1") - 50mm	1
MTGUTC273563	27-35mm (1") - 63mm	1
MTGUTC355032	35-50mm (1") - 32mm	1
MTGUTC355040	35-50mm (1 1/2") - 40mm	1
MTGUTC355050	35-50mm (1 1/2") - 50mm	1
MTGUTC355063	35-50mm (1 1/2") - 63mm	1

### 16. UNI TRANS FEMALE ADAPTOR



CODE	Size	Box Qty
MTGUTFA152212	15-22mm (1/2")	1
MTGUTFA15221234	15-22mm (1/2" - 3/4")	1
MTGUTFA1522121	15-22mm (1/2" - 1")	1
MTGUTFA212734	21-27mm (3/4")	1
MTGUTFA2127341	21-27mm (3/4" - 1")	1
MTGUTFA212734114	21-27mm (3/4" - 1 1/4")	1
MTGUTFA273511	27-35mm (1")	1
MTGUTFA2735114	27-35mm (1" - 1 1/4")	1
MTGUTFA3550112	35-50mm (1 1/2" - 1 1/2")	1

### 17. UNI TRANS MALE ADAPTOR



CODE	Size	Box qty
MTGUTMA152212	15-22mm (1/2")	1
MTGUTMA15221234	15-22mm (1/2" - 3/4")	1
MTGUTMA15221	15-22mm (1/2" - 1")	1
MTGUTMA212734	21-27mm (3/4")	1
MTGUTMA2127341	21-27mm (3/4" - 1")	1
MTGUTMA21273411	21-27mm (3/4" - 1 1/4")	1
MTGUTMA273511	27-35mm (1")	1
MTGUTMA2735114	27-35mm (1" - 1 1/4")	1
MTGUTMA2735112	27-35mm (1" - 1 1/2")	1
MTGUTMA3550112114	35-50mm (1 1/2") - 1 1/4"	1
MTGUTMA3550112112	35-50mm (1 1/2") - 1 1/2"	1
MTGUTMA35501122	35-50mm (1 1/2" - 2")	1



# MDPE COILS AND FITTINGS

## MDPE Pipe & Pipe Fittings

**DAVANT** Plumbing

### 18. UNIVERSAL END CAP

CODE	Size	Box qty
MTGUEC15	15-22mm (1/2")	1
MTGUEC21	21-27mm (3/4")	1
MTGUEC27	27-35mm (1")	1
MTGUEC35	35-50mm (1 1/2")	1



### 19. UNIVERSAL 90 DEGREE ELBOW

CODE	Size	Box qty
MTGUTEC152216	15-22mm (1/2") - 16mm	1
MTGUTEC152220	15-22mm - 20mm	1
MTGUTEC152225	15-22mm (1/2") - 25mm	1
MTGUTEC212725	21-27mm (3/4") - 25mm	1
MTGUTEC212732	21-27mm (3/4") - 32mm	1
MTGUTEC273540	27-35mm (1") - 40mm	1



### 20. TOTAL MAINS SLIP COUPLING

CODE	Size	Box qty
MTTSC20	20mm	50
MTTSC25	25mm	35
MTTSC32	32mm	25
MTTSC40	40mm	11
MTTSC50	50mm	14
MTTSC63	63mm	15
MTTSC75	75mm	14
MTTSC90	90mm	8
MTTSC110	110mm	3



### 21. UNI REPAIR COUPLING

CODE	Size	Box qty
MTGURC15221522	15-22mm (1/2")	1
MTGURC15222127	15-22mm (1/2") - 21-27mm (3/4")	1
MTGURC15222735	15-22mm - 27-35mm	1
MTGURC21272127	21-27mm (3/4")	1
MTGURC21272735	21-27mm (3/4") - 27-35mm (1")	1
MTGURC21273550	21-27mm - 35-50mm	1
MTGURC27352735	27-35mm (1")	1
MTGURC27353550	27-35mm (1") - 35-50mm (1 1/2")	1
MTGURC35503550	35-50mm (1 1/2")	1



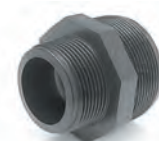
### 22. UNI 90 DEGREE REPAIR TEE

CODE	Size	Box qty
MTGURT21271522	21-27mm (3/4") - 15-22mm (1/2")	1
MTGURT27352127	27-35mm (1") - 21-27mm (3/4")	1
MTGURTF152212	15-22mm (1/2")	1



### 23. TOTAL MAINS REDUCING NIPPLE

CODE	Size	Box qty
MTTRN3412	3/4" - 1/2"	1
MTTRN134	1" - 3/4"	1
MTTRN1141	1 1/4" - 1"	1
MTTRN112114	1 1/2" - 1 1/4"	1
MTTRN2112	2" - 1 1/2"	1
MTTRN2122	2 1/2" - 2"	1
MTTRN3212	3" - 2 1/2"	1
MTTRN4212	4" - 2 1/2"	1
MTTRN43	4" - 3"	1



DRAINAGE

# MDPE COILS AND FITTINGS

## MDPE Pipe & Pipe Fittings

**DAVANT** Plumbing

### 24. TOTAL MAINS PIPE LINER



CODE	Size	Box qty
MTTPL20	20mm	1400
MTTPL25	25mm	800
MTTPL32	32mm	400
MTTPL40	40mm	400
MTTPL50	50mm	300
MTTPL63	63mm	172

### 25. COMPRESSION UNION VALVE X FEMALE



CODE	Size	Box qty
MTGCVF20	20 x 1/2"	1
MTGCVF25	25 x 3/4"	1
MTGCVF32	32 x 1"	1
MTGCVF40	40mm x 1 1/2"	1
MTGCVF50	50mm x 2"	1
MTGCVF63	63mm x 2 1/2"	1

### 26. UNI X UNI COMPRESSION VALVE



CODE	Size	Box qty
MTGUUCV152	15-22mm	1
MTGUUCV15222127	15-22mm - 21-27mm	1
MTGUUCV2127	21-27mm - 21-27mm	1
MTGUUCV2735	27-35mm	1
MTGUUCV3550	35-50	1

### 27. PE-PE COMPRESSION VALVE



CODE	Size	Box qty
MTGCV16	16mm	1
MTGCV20	20mm	1
MTGCV25	25mm	1
MTGCV32	32mm	1
MTGCV40	40mm	1
MTGCV50	50mm	1
MTGCV63	63mm	1

### 28. UNIVERSAL COMPRESSION VALVE



CODE	Size	Box qty
MTGUCV251522	25mm (15-22mm)	1
MTGUCV252127	25mm (21-27mm)	1
MTGUCV321522	32mm (15-22mm)	1
MTGUCV322127	32mm (21-27mm)	1
MTGUCV402735	40mm (27-35mm)	1
MTGUCV503550	50mm-(35-50mm)	1



# SECTION 2

## contents

### **PLASTIC PLUMBING SYSTEM**

---

- 60 Cold Water Tanks
- 68 Whitespeed Pipe & Fittings
- 73 Whitespeed Technical Data
- 76 GPF Pipe (Grey Pushfit System & Fittings)
- 81 GPF Technical Data

### **OIL TANKS**

---

- 84 Carbery Oil Tanks
- 88 Fuel Caddies
- 89 Mobi Pionts

### **AGRICULTURE**

---

- 90 Rain Water Collection
- 93 Coal Bunkers
- 94 Bund Stores
- 95 Ad-Blue
- 96 Roto Composter

### **TERMS & CONTACTS**

---

- 99 Credit Application Form
- 100 Conditions Of Sale
- 101 UK Sales Map



# COLD WATER TANKS



## CONTENTS

Key Features of Davant Cold Water Storage Cisterns

4 Gal Rectangular Cisterns, Lids & Jackets

Open Top Cisterns (Oval) – complete with kits

Coffin Tanks – complete with kits

Circular Cisterns, lids, jackets & packs

Single jackets to suit Open Top Cisterns (Oval) & Coffin Tanks

Tank Accessories to include Byelaw 30 Fittings kits, Ball Valve

Packs & Backing Plate

### **Byelaw 30 kit**

This kit is suitable for our range of cold water loft tanks.

- Screened warning pipe elbow
- Dip tube
- Ball valve back plate (suitable for 1/2" or 3/4" ball valve)
- Plastic support washer
- Rubber sealing washer
- Insulation jacket ties
- Screwed breather
- Screwed vent pipe sleeve

# COLD WATER TANKS

## Key Features:

- Roto-moulded from approved hygienic polypropylene plastic
- Robust cistern design for maximum durability
- Available in capacities from 4 to 100 gallons (18 to 455 litres)
- Kitemarked on selected models
- WRAS approved materials
- Manufactured to BS4213:2004
- 1-Year Guarantee against manufacturing defects

## Now supplied complete with kits\*

To make it easier for the installer and help ensure installation complies with the water regulations, we have updated our range and now supply our most popular cisterns with kits.



Close Fitting Lid



Insulation Jacket (60mm) & Ties



Byelaw 30 Fittings & Backplate

\*Oval Kitemarked cisterns and Low Level (Coffin) cisterns only  
+ BM4RTK30 Does not include Byelaw 30 fittings (Lid, Jacket & backing plate only)

## RECTANGULAR CISTERN

### 1. BM4 GAL RECTANGULAR CISTERN

CODE	Height	Width	Depth	Capacity (gallons)	Capacity (litres)
BM4R	305mm	296mm	442mm	4	18



### 2. BM4 GAL RECTANGULAR LID

CODE	Height	Width	Depth	Capacity (gallons)	Capacity (litres)
BM4RL	–	296mm	442mm	–	–



### 3. JACKET TO SUIT RECTANGULAR 4 GAL TANK

CODE	Height	Width	Depth	Capacity (gallons)	Capacity (litres)
TJ181212	–	–	–	–	–



### 4. 4 GAL RECTANGULAR PACK - INCLUDES LID, JACKET & BACKING PLATE

CODE	Height	Width	Depth	Capacity (gallons)	Capacity (litres)
BM4RTK30	–	–	–	–	–



## OPEN TANKS

### OPEN TOP (STACKABLE)

Popular with installers, open top cisterns can be easier to fit through tight loft hatches. With the open top giving full access for fitting all components, making the tank substantially quicker to fit.



#### 1. 1.5 GAL OPEN TOP TANK WITH LID, JACKET AND FITTINGS KIT

CODE	Height	Width	Depth	Capacity (gallons)	Capacity (litres)
BMC15R	380mm	860mm	508mm	15	68



#### 2. 25 GAL OPEN TOP TANK WITH LID, JACKET AND FITTINGS KIT

CODE	Height	Width	Depth	Capacity (gallons)	Capacity (litres)
BMC25R	515mm	860mm	508mm	25	114



#### 3. 40 GAL OPEN TOP TANK WITH LID, JACKET AND FITTINGS KIT

CODE	Height	Width	Depth	Capacity (gallons)	Capacity (litres)
BMC40R	440mm	1265mm	670mm	40	182



#### 4. 50 GAL OPEN TOP TANK WITH LID, JACKET AND FITTINGS KIT

CODE	Height	Width	Depth	Capacity (gallons)	Capacity (litres)
BMC50R	525mm	1265mm	670mm	50	227



## COFFIN TANKS

### 1. 25 GAL COFFIN TANK WITH JACKET AND FITTINGS KIT

CODE	Height	Width	Depth	Capacity (gallons)	Capacity (litres)
BMC25X	395mm	1120mm	490mm	25	114



### 2. 40 GAL COFFIN TANK WITH JACKET AND FITTINGS KIT

CODE	Height	Width	Depth	Capacity (gallons)	Capacity (litres)
BMC40X	495mm	1562mm	457mm	40	182



### 3. 50 GAL COFFIN TANK WITH JACKET AND FITTINGS KIT

CODE	Height	Width	Depth	Capacity (gallons)	Capacity (litres)
BMC50X	490mm	1420mm	530mm	50	227



### 4. 100 GAL COFFIN TANK WITH JACKET AND FITTINGS KIT

CODE	Height	Width	Depth	Capacity (gallons)	Capacity (litres)
BMC100X	590mm	1790mm	644mm	100	455



# COLD WATER TANKS

## CIRCULAR CISTERNS



### 1. 25 GAL CIRCULAR CISTERN

CODE	Height	Width	Depth	Capacity (gallons)	Capacity (litres)
B25C	533mm	686mm	580mm	25	114



### 2. LID TO SUIT 25 GAL CIRCULAR CISTERN

CODE	Height	Width	Depth	Capacity (gallons)	Capacity (litres)
B25CL					



### 3. JACKET TO SUIT 25 GAL CIRCULAR CISTERN

CODE	Height	Width	Depth	Capacity (gallons)	Capacity (litres)
TJ25					



### 4. 25 GAL CIRCULAR PACK – INCLUDES LID, JACKET, BYELAW 30 KIT, BALL VALVE PACK & BACKING PLATE

CODE	Height	Width	Depth	Capacity (gallons)	Capacity (litres)
B25CTK(30)					



### 5. 50 GAL (FLEXI) CIRCULAR CISTERN

CODE	Height	Width	Depth	Capacity (gallons)	Capacity (litres)
B50CF	610mm	838mm	838mm	50	227



### 6. LID TO SUIT 50 GAL (FLEXI) CIRCULAR CISTERN

CODE	Height	Width	Depth	Capacity (gallons)	Capacity (litres)
B50CLF					



### 7. JACKET TO SUIT 50 GAL CIRCULAR CISTERN

CODE	Height	Width	Depth	Capacity (gallons)	Capacity (litres)
TJ50					



### 8. 50 GAL CIRCULAR PACK – INCLUDES LID, JACKET, BYELAW 30 KIT, BALL VALVE PACK & BACKING PLATE

CODE	Height	Width	Depth	Capacity (gallons)	Capacity (litres)
B50CTK(30)					

## JACKETS

### 1. JACKET FOR 15 GAL OVAL TANK

CODE	Height	Width	Depth	Capacity (gallons)	Capacity (litres)
TJO15					

### 2. JACKET FOR 25 GAL OVAL TANK

CODE	Height	Width	Depth	Capacity (gallons)	Capacity (litres)
TJO25					

### 3. JACKET FOR 40 GAL OVAL TANK

CODE	Height	Width	Depth	Capacity (gallons)	Capacity (litres)
TJO40					

### 4. JACKET FOR 50 GAL OVAL TANK

CODE	Height	Width	Depth	Capacity (gallons)	Capacity (litres)
TJO50					

### 5. JACKET FOR 25 GAL COFFIN TANK

CODE	Height	Width	Depth	Capacity (gallons)	Capacity (litres)
TJX25					

### 6. JACKET FOR 40 GAL COFFIN TANK

CODE	Height	Width	Depth	Capacity (gallons)	Capacity (litres)
TJX40					

### 7. JACKET FOR 50 GAL COFFIN TANK

CODE	Height	Width	Depth	Capacity (gallons)	Capacity (litres)
TJX50					

### 8. JACKET FOR 100 GAL COFFIN TANK

CODE	Height	Width	Depth	Capacity (gallons)	Capacity (litres)
TJX100					

### 1. BYELAW 30 FITTING KITS

CODE
EK201

### 2. BALL VALVE PACK

CODE
BB4RPACK
BBPACK

### 3. GALVANISED BALL VALVE BACKING PLATE

CODE
BAPLATEL



# WHITESPEED PIPE

## Polybutylene Pipe and Fittings

**DAVANT** Whitespeed

### COILS & LENGTHS

#### 1. BARRIER PIPE - COILS



CODE	Size	Pack
KDBC1025	10mm x 25m Coils	1
KDBC1050	10mm x 50m Coils	1
KDBC15100	15mm x 100m Coils	1
KDBC1525	15mm x 25m Coils	1
KDGB1530	15mm x 30m Coils	1
KDBC1550	15mm x 50m Coils	1
KDBC2225	22mm x 25m Coils	1
KDGB2230	22mm x 30m Coils	1
KDBC2250	22mm x 50m Coils	1

#### 2. BARRIER PIPE - LENGTHS



CODE	Size	Pack
KDBL153	15mm x 3m Lengths	20
KDBL155	15mm x 5.8m Lengths	20
KDBL223	22mm x 3m Lengths	10
KDBL225	22mm x 5.8m Lengths	10

#### 3. PEX BARRIER PIPE - COILS



CODE	Size	Pack
KDPBC1525	15mm x 25m PEX Coils	1
KDPBC1550	15mm x 50m PEX Coils	1
KDPBC2225	22mm x 25m PEX Coils	1
KDPBC2250	22mm x 50m PEX Coils	1

#### 4. PEX BARRIER PIPE - LENGTHS



CODE	Size	Pack
KDPBL153	15mm x 3m PEX Lengths	20
KDPBL223	22mm x 3m PEX Lengths	10

### FITTINGS

#### 1. UNIVERSAL PIPE INSERT (PLASTIC)



CODE	Size	Pack
KPUI15	15mm	50
KPUI22	22mm	50

#### 2. PIPE INSERT (METAL) SUITABLE FOR PB PIPE ONLY



CODE	Size	Pack
KPPI10	10mm	50
KPPI15M	15mm	50
KPPI22M	22mm	50

#### 3. STRAIGHT COUPLER



CODE	Size	Pack
KDSC10	10mm	10
KDSC15	15mm	10
KDSC22	22mm	5

# WHITESPEED PIPE

## Polybutylene Fittings

DAVANT Whitespeed

### 4. SOCKET REDUCER

CODE	Size	Pack
KDSKR1510	15mmx10mm	10
KDSKR2215	22mmx15mm	10



### 5. ELBOW

CODE	Size	Pack
KDE10	10mm	10
KDE15	15mm	10
KDE22	22mm	10



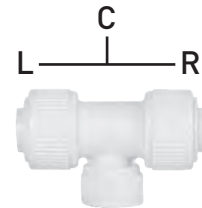
### 6. TEE

CODE	Size	Pack
KDT10	10mm	10
KDT15	15mm	10
KDT22	22mm	10



### 7. REDUCING TEE

CODE	Size	Pack
KDUT151510	15x15x10mm	5
KDUT151010	15x10x10mm	5
KDUT151015	15x10x15mm	5
KDUT222210	22x22x10mm	5
KDUT222215	22x22x15mm	5
KDUT221522	22x15x22mm	5
KDUT221515	22x15x15mm	5



WHEN ORDERING REDUCING TEES, PLEASE ORDER AS PER IMAGE USING LEFT, RIGHT, CENTRE

### 8. STOP COCK(FOR COLD WATER USE ONLY)

CODE	Size	Pack
KDSV15	15mm	1
KDSV22	22mm	1



### 9. STRAIGHT REDUCER

CODE	Size	Pack Qty
KDSR1510	15mmx10mm	10
KDSR2215	22mmx15mm	10



### 10. DEMOUNTABLE TOOL

CODE	Size	Pack Qty
KDDT15	15mm	50
KDDT22	22mm	50



### 11. STOP END

CODE	Size	Pack Qty
KDSE10	10mm	10
KDSE15	15mm	10
KDSE22	22mm	10



# WHITESPEED PIPE

## Polybutylene Fittings and Accessories

**DAVANT** Whitespeed



### 12. APPLIANCE VALVE BLUE/RED REVERSIBLE DISK

CODE	Size	Pack Qty
KDWM15	15mmx3/4"	1



### 13. 4 PORT MANIFOLD (22MM SOCKET:10MM PORTS)

CODE	Size	Pack Qty
KDMAN4	22mm x 10mm	5



### 14. BRASS FEMALE ADAPTER (STRAIGHT)

CODE	Size	Pack Qty
KDFAS15B	15mm x 1/2"	10
KDFAST22B	22mm x 3/4"	10
KDFASH22B	22mm x 1/2"	10



### 15. TYPE 'A' D.O.C.

CODE	Size	Pack Qty
KPDO15	15mm	10



### 16. WALL PLATE ELBOW

CODE	Size	Pack Qty
KDWE15	15mm	5



### 17. BRASS FEMALE ADAPTER (ELBOW)

CODE	Size	Pack Qty
KDFAE15B	15mm x 1/2"	5
KDFAE22B	22mm x 3/4"	5



### 18. BRASS MALE ADAPTER (STRAIGHT)

CODE	Size	Pack Qty
KDMAS15B	15mm x 1/2"	10
KDMAS22B	22mm x 3/4"	10



### 19. TANK CONNECTORS

CODE	Size	Pack
KDTC15	15mm	10
KDTC22	22mm	10



### 20. STRAIGHT TAP CONNECTORS

CODE	Size	Pack
KDSTC15	15mm	10
KDSTC22	22mm	10

# WHITESPEED PIPE

## Polybutylene Fittings and Accessories

DAVANT Whitespeed

### 21. BENT TAP CONNECTOR

CODE	Size	Pack Qty
KDBTC15	15mm	10



### 22. 'O' RING

CODE	Size	Pack Qty
KPOR10	10mm	50
KPOR15	15mm	50
KPOR22	22mm	50



### 23. SPACE WASHER

CODE	Size	Pack Qty
KDSW15	15mm	50
KDSW22	22mm	50



### 24. STANDARD PIPE CUTTER

CODE	Size	Pack Qty
KPCUTTER		1



### 25. GRAB RING

CODE	Size	Pack Qty
KDGR15	15mm	50
KDGR22	22mm	50



### 26. TALON BULLDOG CLIP (POLYPROPYLENE)

CODE	Size	Pack Qty
KDBD15	15mm Bulldog Clip	100
KDBD22	22mm Bulldog Clip	100



### 27. TALON NAIL CLIP (POLYPROPYLENE)

CODE	Size	Pack Qty
KDNC15	15mm Nail-inClip	100
KDNC22	22mm Nail-inClip	100



### 28. TALON SNAP-FIT CLIP (POLYPROPYLENE)

CODE	Size	Pack Qty
KDSF15	15mm Snap-FitClip	100
KDSF22	22mm Snap-FitClip	100



# WHITESPEED PIPE

## Demountable Plastic Plumbing System

DAVANT Whitespeed



### 29. WHITESPEED STAND

Product/SIZE	Qty
STRAIGHT 15mm	120
STRAIGHT 22mm	60
ELBOW 15mm	100
ELBOW 22mm	50
TEE 15mm	80
TEE 22mm	30
STOPEND 15mm	80
STOPEND 22mm	30
STRAIGHT TAP CONNECTOR 15x1/2"	60
STRAIGHT TAP CONNECTOR 22x3/4"	30
BENT TAP CONNECTOR 15x1/2"	30
STRAIGHT REDUCER 22x15mm	30
REDUCING TEE 22x22x15mm	15
LEVER VALVES (BRASS)15mm	15
APPLIANCE VALVE 15x3/4"	35
ISOLATING VALVE 15mm	45
PIPE INSERT 15mm	1050
PIPE INSERT 22mm	450
TOTAL FITTINGS	2310

KPSTAND



# WHITESPEED PIPE

## Demountable Plastic Plumbing System

DAVANT Whitespeed

WHITESPEED is the new, totally flexible plumbing system from Davant Products, the result of considerable investment in research and development. WHITESPEED is tailor made for the professional plumbing and heating installer who wants a high quality system that is simple to fit, durable in use, yet competitively priced.

### High level of specification

Manufactured in accordance with the highest European Quality Standards, including BS EN ISO 9002, the WHITESPEED polybutylene pipe and fittings system conforms to BS7291 Parts 1 and 2.

### Comprehensive range

The system offers a comprehensive choice of pipe and fittings in 10mm, 15mm, 22mm and 28mm sizes, suitable for all hot and cold plumbing and central heating systems. It can be used in both sealed and open vented systems and has been designed to withstand constant pressure at high temperatures. The combination of low thermal conductivity and high corrosion resistance makes it ideal for use in central heating systems.

### Easy to handle and fit

The WHITESPEED polybutylene system offers the installer major advantages. The flexible nature of the pipe allows a cabling option, which speeds up pipework routing significantly. It will also cable through joists easily, thus dispensing with the time consuming task of pipe bending and joint compressing in confined areas. WHITESPEED piping is so flexible that it can be bent to 8 times its diameter without the need for a joint.

Few tools are needed to complete even the most complex pipework systems. Joints are push-fit for simplicity and speed of installation. Nothing could be more simple, cleaner or safer. WHITESPEED strongly recommends the use of lubricants which reduces installation time and ensures a perfect joint, first time, every time.

### Using WHITESPEED with other pipe and fittings

The WHITESPEED polybutylene system is extremely versatile



### Joining

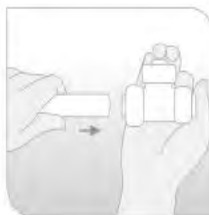


Use only purpose designed pipe cutters and cut the pipe squarely. Ensure the pipe is free from burrs and scratches.

Do not use a hacksaw.



Always use the correct pipe insert.



Ensure all cap nuts are hand tightened. Visually check the internal components. Make the correct insertion depth by observing the chevron markings on the pipe. Push the pipe firmly and horizontally into the fitting. A secure joint has been made when the correct insertion marking is reached.

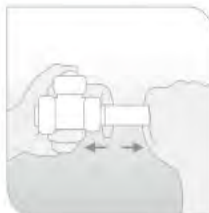


After checking the correct insertion depth has been achieved, pull back on the pipe firmly to ensure the grab ring engages correctly.

### Dismantling



Ensure that the system is depressurized. Hold the pipe firmly and push the pipe inward toward the joint. Place the demounting tool against the collet.



Press the demounting tool against the collet and then pull the pipe releasing it from the joint.

**Do not pull the pipe prior to applying the correct inward pressure on the collet.**



If the pipe is damaged (grab ring mark) while dismantling the fitting, then cut the pipe behind the grab ring mark to ensure the piece of pipe with the initial insertion is not reused.

# WHITESPEED PIPE

## Demountable Plastic Plumbing System

### Advantages and Physical Properties & Guidelines

- Applications           ·Painting
- Handling               ·Cabling
- Storage

### Installation Instructions

- Connecting to Metric Copper       ·Clipping
- Connecting to Compression Fittings ·Laying in Concrete and Masonry
- Connecting to Heating Appliances   ·System Testing
- Bending the Pipe                       ·Corrosion Inhibitors

### General Precautions

- Electric Installations       ·Chlorine
- Rodents                       ·Gases, Fuels and Fuel Oils

### Installation Codes and Product Guidelines

- Product Guarantees
- Technical Helpline

### INTRODUCTION

- Installation Codes and Product Guidelines
- Product Guarantees
- Technical Helpline

WHITESPEED PB offers you a complete and flexible plumbing and heating system manufactured in a BS EN ISO 9002 approved facility. WHITESPEED PB pipe and fittings are both manufactured from the same raw material, therefore offering uniform expansion and contraction, with an extensive range of both pipe and fittings available in 10, 15, 16, 20, 22, 25 & 28mm.

WHITESPEED PB fittings house an 'O' ring, spacer washer and grab ring and employ a simple push-fit technique for joining the fitting to the pipe. It is suitable for both sealed and open vented heating systems. With its low thermal conductivity and high resistance to corrosion, WHITESPEED PB offers you the ideal product for all domestic water supplies and central heating applications.

Manufactured to BS 7291 Part 1 and 2 Class S and awarded BSI Kitemark License No. KM52006 for Thermoplastic hot and cold pipe and fittings produced in polybutylene.

### AFFILIATIONS

The Institute of Plumbing, Scottish & Northern Ireland Plumbing Employers Federation

### CERTIFICATIONS

BS 7291 Part 1 and 2 Class S  
BS EN ISO 9002 Registered Company

### ADVANTAGES

WHITESPEED PB offers you a quick and simple push-fit installation, with our "straight" coiled pipes of 50m and 100m eliminating the need for several joints on continuous runs. The flexible properties of polybutylene require fewer fittings to complete the job; installation time can be reduced by as much as 40%. The pipe is much easier to install than copper due to its flexibility, allowing the installer to cable through joists and around obstructions with ease, even the fittings can be rotated under pressure. Blowtorches, solders and tools are no longer required to make a watertight joint.

The high impact resistance of polybutylene, due to its flexible properties, means that it is not easily damaged by impact or accidental crushing, resulting in less wastage.

WHITESPEED PB has higher heat retention than copper, (insulation is still recommended) resulting in pipes being cooler to the touch.

WHITESPEED PB pipes and fittings have low thermal conductivity which means that condensation on cold water pipes is greatly reduced having the added benefit of a higher resistance to the pipes freezing.

Using WHITESPEED PB pipe and fittings as opposed to copper results in less mechanical noise through the pipework, eliminating the hammer effect, thus, giving a much quieter operating system.

WHITESPEED PB pipe and fittings have little monetary scrap value keeping theft from the site of installation to a minimum.

WHITESPEED PB pipe and fittings are completely non-toxic offering the safest possible system to guard against water contamination.

WHITESPEED PB pipe and fittings are also completely de-mountable aiding the plumber during installation.

### Product physical properties and guidelines

TEMPERATURE	PRESSURE	PSI
20°C	12 Bar	174
65°C	6 Bar	87
82°C	3.5 Bar	51

Properties	Unit	Test Method	PF PB pipe
Melt Flow Rate	g/10min	ASTM D 1238	0..5
Density	G/cm	ASTM D 1505	0.920
Tensile Strength at Yield	Kg/cm3	ASTM D 638	175
Tensile Strength at Break	Kg/cm3	ASTM D 638	400
Elongation at Break	%	ASTM D 638	330
Tensile Modulus	Kg/cm3	JIS K 7113	4000
Izod Impact Strength	Kg/cm/cm	ASTM D 256	No Break
Shore Hardness	D Scale	ASTM D 2240	60
Melting Point	°C	DSC	127
Vicat Softening Point	°C	JIS K 7206	119
Brittleness Temp	°C	JIS K 7216	-18 Lower than
Coefficient Of Expansion	Cm/cm/°C	ASTM D 696	1.3 x104
Thermal Conductivity	Kcal/mhr° C°C	ASTM C 177	0.33

### APPLICATIONS

WHITESPEED PB pipe and fittings offer excellent performance for long term pressure at high temperatures, coupled with its low thermal conductivity and high resistance to corrosion, making it the ideal product for central heating systems.

WHITESPEED PB pipe and fittings are also suitable for the installation of indirect and direct mains fed cold water services, vented and unvented hot water systems. WHITESPEEDPB barrier pipe is highly recommended for use in Underfloor Heating Systems making the complete range of WHITESPEED PB pipe and fittings one of the most versatile products available to the plumbing installer to date.

WHITESPEED PB pipe and fittings can even be installed into caravans and boats where flexibility, low weight and resistance to freezing make them the most versatile products to use.

### HANDLING

Care should be taken when handling all polybutylene products especially pipe, avoid dragging along the ground, rubbing against rough surfaces like walls and concrete floors which could reduce the wall thickness of the pipe. When feeding pipe through holes in brickwork and walls always cover the end of the pipe with tape to avoid debris entering the pipe, this will also help in avoiding damage to the joining surface. Care should also be taken to avoid crushing the pipe walls during bending and the wall of the pipe being punctured by sharp objects.

### STORAGE

WHITESPEED PB pipe and fittings should always be stored in their protective wrapper, away from sources of ultra violet light, for example direct sunlight. Where installation is unavoidable in areas of direct sunlight and sources of artificial ultra violet light always install the pipework into ducting. When storage of pipe is required for any length of time do not exceed 1.5metre stack heights for coils and 1 metre stack heights for straight lengths.

### PAINTING

WHITESPEED PB pipe and fittings can be painted using normal household paints; however solvent based products and cellulose paints should not be used. Surfaces to be painted should be free from all deposits of silicone and grease compounds. When required, re-painting may be achieved by gently rubbing down with wet and dry using a grade no coarser than 400, hot air guns and chemical based paint strippers should never be used on any polybutylene products.

### CABLING

WHITESPEED PB pipes flexibility enables the installer to thread the pipe through concealed and inaccessible spaces with minimal or no disruption to the surrounding building resulting in major savings to installation time. The flexibility of WHITESPEED PB pipe means that pipework can be threaded through dry wall systems, studded partitions and cabled through holes drilled into joists. There are restrictions as to where joists can be drilled and notched, these restrictions can be found in the Building Regulations Approved Document A and BS 6700: 1997.

# WHITESPEED PIPE

## Demountable Plastic Plumbing System

As a general guide:

Holes in roof and floor joists should be no greater than 0.25 times the overall depth.

Holes drilled into the joist should be drilled at the neutral axis and should not be less than 3 diameters (centre to centre) apart.

Holes should be spaced between 0.25 and 0.4 times the span from the support.

Notches in roof and floor joists should be no deeper than 0.125 times the depth of the joist.

Notches in roof and floor joists should under no circumstance be cut any closer to the support than 0.07 of the span and no further away than 0.25 times the span.

### Installation Instructions

#### CONNECTING TO METRIC SIZE COPPER

WHITESPEED PB fittings are suitable for use with all metric sized copper tube manufactured to BS2871.

The copper tube should be cut using a plumber's pipe cutter, remove all sharp edges to avoid damaging the O-ring when inserting into the WHITESPEED PB fitting.

#### CONNECTING TO METRIC SIZE COMPRESSION FITTINGS

WHITESPEED PB pipe can be used with compression fittings manufactured to BS864. A WHITESPEED stainless steel insert must always be inserted into the WHITESPEED PB pipe before compressing the joint. The olive must be within the length of the support sleeve and PTFE tape over the olive will ensure a watertight seal is achieved.

#### CONNECTING TO A HEATING APPLIANCE

When connecting to any heating appliance you must ensure that at least 2 metres of copper pipe is firstly connected to the heating appliance on both the flow out and the return before connecting to WHITESPEED PB pipe. Care should be taken to ensure that the heating appliance has the appropriate thermostatic cut out controls to ensure that operating temperatures do not exceed the pressure and temperature limits for Class S thermoplastic pipe.

#### BENDING THE PIPE

WHITESPEED PB pipe's immense flexibility enables the installer, by clipping the pipe into place, to cold form bends up to 8 times the pipes diameter, in many cases dispensing with the need to make elbow connections, again reducing installation time.

#### CLIPPING

WHITESPEED PB pipe as with all polybutylene pipe is not self supporting like copper, it is therefore recommended that polybutylene pipe be supported as set out in BS5955: Part 8:1990.

#### RECOMMENDED CLIPPING DISTANCES

NORMAL DIAMETER	HORIZONTAL RUNS	VERTICAL RUNS
10mm	0.3m	0.5m
15mm	0.3m	0.5m
16mm	0.4m	0.6m
20mm	0.5m	0.8m
22mm	0.5m	0.8m
25mm	0.5m	0.8m
28mm	0.8m	1.0m

### Installation Instructions

#### LAYING INTO CONCRETE AND MASONRY

GPF PB pipe and fittings can be laid into concrete and masonry provided that they are installed into conduit pipe and junction boxes.

This is to ensure that access to the pipe and fittings can take place should the need arise to carry out any maintenance.

Insulation is also recommended to protect against frost and heat loss.

Please check recommendations as outlined in Byelaw 58.

#### SYSTEM TESTING

A full scale systems check should be carried out in accordance with BS6700: 1997 and Water Supply Regulations 1999.

When the installation is complete the system should be filled and flushed out, refill the system slowly to avoid any air locks.

WHITESPEED PB blanking caps and stop ends are particularly useful to plug all outlets prior to system testing taking place.

We recommend that the system be subjected to a hydraulic pressure

test for 30 minutes at 10-bar minimum then reducing to 5-bar for a further 30 minutes. When testing be sure that pressures used do not

exceed manufacturer's levels for boilers, cylinders and pumps.

Any drop off in pressure over this period should be investigated and any leakages within the system must be repaired or replaced.

### CORROSION INHIBITORS

It is recommended that a corrosion inhibitor be used at all times. WHITESPEED PB pipe and fittings are in no way affected by the anti-corrosion properties found in compounds such as Sentinel and Fernox. All heating circuits should be protected by an appropriate inhibitor as oxygen may enter the system through a variety of points such as pumps, header tanks and valves.

WHITESPEED PB barrier pipe has the added advantage of an oxygen barrier incorporated into the pipe to greatly reduce the ingress of oxygen through the pipe wall.

It is therefore highly recommended that barrier pipe be used along with an inhibitor on all sealed heating systems.

General Precautions

### ELECTRICAL INSTALLATIONS

WHITESPEED PB pipe as with all plastic products is non-conductive and

should not be used to provide an earth return.

Where WHITESPEED PB pipe is used to replace a section of existing copper pipe that was previously earthed, electrical continuity should be reinstated by affixing a section of earth cable between the ends of the copper pipe secured to the metal using clamps or clips. No requirements are however needed to bond the pipe work to earth on new installations where no metal pipe is installed.

However all electrical requirements for heaters, cylinders and pumps etc. should be taken into account. If in any doubt consult a qualified electrician.

### RODENTS

In this day and age it is highly unlikely for properties to be infested with rodents. However, if rodents are present in large numbers and no steps towards extermination have been carried out, it is possible that damage to electrical and plumbing materials, including WHITESPEED PB, could occur.

### CHLORINE

The WHITESPEED PB range of pipe and fittings are suitable for carrying normal levels of chlorine found in domestic water supply systems.

It is however not suitable for carrying large quantities, for example, water circulation of swimming pools that use large concentrations of chlorine.

Short-term exposure of chlorine used for disinfecting will have no adverse effect on the system provided the maximum permitted level of 5ppm is not exceeded.

### GASES, FUEL AND FUEL OILS

WHITESPEED PB pipe and fittings are not suitable for the transportation of gases, steam and compressed air; it is also not suitable for the transportation of fuel oils including petroleum.

### INSTALLATION CODES AND PRODUCT GUIDELINES

The guides and standards below should be followed during design and installation when using WHITESPEED PB pipe and fittings.

BSEN806 . Specification for design, installation, testing and maintenance of services supplying water for domestic use within buildings and their curtilages.

WSR:1999. Water Supply Regulations 1999.

WIA:1991. Water Industry Act 1991.

BS 5955 Part 8:1990. Specification for the installation of thermoplastic pipe and fittings for use in domestic hot and cold water services, and heating systems.

BS8000. Workmanship on building sites Part 15: 1990 code of practice for hot and cold water services.

The Institute of Plumbing's. - Plumbing Engineering Services Design Guide.

Guide to the use of plastic pipework. TR11, HVCA, 1992.

Mechanical and electrical standard specification for heating, hot and cold water installations for dwellings.

Published by the former PSA.

### PRODUCT GUARANTEE

25 Year Product Guarantee.

WHITESPEED PB pipe and fittings are guaranteed for 25 years against defects in materials or manufacture from date of purchase.

This guarantee only applies if the system is installed to the recommendations within this Technical and Installation guide, and is used in a normal domestic operation.

### TECHNICAL HELPLINE

For further information please contact our Technical Helpline on:

Tel. 01531 630068

Fax. 01531 636638

Email: info@davant.co.uk

# GPF PIPE

## Polybutylene Pipe



## COILS & LENGTHS

### 1. BARRIER PIPE - COILS



CODE	Size	Pack
KPBC1025	10mm x 25m Coils	1
KPBC1050	10mm x 50m Coils	1
KPBC1525	15mm x 25m Coils	1
KPBC1550	15mm x 50m Coils	1
KPBC15100	15mm x 100m Coils	1
KPBC2225	22mm x 25m Coils	1
KPBC2250	22mm x 50m Coils	1



### 2. BARRIER PIPE - LENGTHS

CODE	Size	Pack Qty
KPBL153	15mm x 3m Lengths	20
KPBL155	15mm x 5.8m Lengths	20
KPBL223	22mm x 3m Lengths	10
KPBL225	22mm x 5.8m Lengths	10

## FITTINGS

### 1. UNIVERSAL PIPE INSERT (PLASTIC)



CODE	Size	Pack
KPUI15	15mm	50
KPUI22	22mm	50



### 2. PIPE INSERTS (METAL)

CODE	Size	Pack Qty
KPPI10	10mm	50
KPPI15M	15mm	50
KPPI22M	22mm	50



## FITTINGS

### 3. STRAIGHT COUPLER

CODE	Size	Pack Qty
KPSC10	10mm	10
KPSC15	15mm	10
KPSC22	22mm	5



### 4. STRAIGHT REDUCER

CODE	Size	Pack Qty
KPSR1510	15mm x 10mm	10
KPSR2215	22mm x 15mm	10



### 5. SOCKET REDUCER

CODE	Size	Pack Qty
KPSKR1510	15mm x 10mm	10
KPSKR2215	22mm x 15mm	10



### 6. ELBOW

CODE	Size	Pack Qty
KPE10	10mm	10
KPE15	15mm	10
KPE22	22mm	10



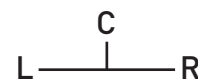
### 7. TEE

CODE	Size	Pack Qty
KPT10	10mm	10
KPT15	15mm	10
KPT22	22mm	10



### 8. UNEQUAL TEE

CODE	Size	Pack Qty
KPUT151510	15x15x10mm	5
KPUT151010	15x10x10mm	5
KPUT151015	15x10x15mm	5
KPUT222210	22x22x10mm	5
KPUT222215	22x22x15mm	5
KPUT221522	22x15x22mm	5
KPUT221515	22x15x15mm	5



WHEN ORDERING REDUCING TEES, PLEASE ORDER AS PER IMAGE USING LEFT, RIGHT, CENTRE

### 9. TANK CONNECTOR

CODE	Size	Pack Qty
KPTC15	15mm	10
KPTC22	22mm	10



### 10. STRAIGHT TAP CONNECTOR

CODE	Size	Pack Qty
KPSTC15	15mm	10
KPSTC22	22mm	10



# GPF PUSHFIT PLASTIC PLUMBING SYSTEM

Polybutylene Fittings



## 11. BENT TAP CONNECTOR

CODE	Size	Pack Qty
KPBTC15	15mm	10



## 12. STOP COCK (FOR COLD WATER USE ONLY)

CODE	Size	Pack Qty
KPSV15	15mm	1
KPSV22	22mm	1



## 13. APPLIANCE VALVE

CODE	Size	Pack Qty
KPWM15B	15mmx3/4" Blue/Red	1



## 14. WALLPLATE ELBOW

CODE	Size	Pack Qty
KPWE15	15mm	5



## 15. BRASS FEMALE ADAPTER (ELBOW)

CODE	Size	Pack Qty
KPFAE15B	15mm x 1/2"	5
KPFAE22B	22mm x 3/4"	5



## 16. BRASS MALE ADAPTER (STRAIGHT)

CODE	Size	Pack Qty
KPMAS15B	15mmx1/2"	10
KPMAS22B	22mmx3/4"	10



## 17. BRASS FEMALE ADAPTER (STRAIGHT)

CODE	Size	Pack Qty
KPFAS10B	10mmx3/8"	10
KPFAS15B	15mmx1/2"	10
KPFAST22B	22mmx3/4"	10
KPFASH22B	22mmx1/2"	10



## 18. TYPE 'A' D.O.C

CODE	Size	Pack Qty
KPDO15	15mm	1



## 19. STOP END

CODE	Size	Pack Qty
KPSE15	15mm	10
KPSE22	22mm	10

# GPF PUSHFIT PLASTIC PLUMBING SYSTEM

## Fittings & Accessories



### 20. 4 PORT MANIFOLD (22MM SOCKET:10MM PORTS)

CODE	Size	Pack Qty
KPMAN4	22mm x 10mm	5



### 21. 'O' RING

CODE	Size	Pack Qty
KPOR10	10mm	50
KPOR15	15mm	50
KPOR22	22mm	50



### 22. SPACE WASHERS

CODE	Size	Pack Qty
KPSW10	10mm	50
KPSW15	15mm	50
KPSW22	22mm	50



### 23. STANDARD PIPE CUTTER

CODE	Pack Qty
KPCUTTER	1



### 24. TALON BULLDOG CLIP (POLYPROPYLENE)

CODE	Size	Pack Qty
KPBD15	15mm Bulldog Clip	100
KPBD22	22mm Bulldog Clip	100



### 25. TALON NAIL-IN CLIP (POLYPROPYLENE)

CODE	Size	Pack Qty
KPNC10	10mm Nail-in Clip	100
KPNC15	15mm Nail-in Clip	100
KPNC22	22mm Nail-in Clip	100



### 26. TALON SNAP-FIT CLIP (POLYPROPYLENE)

CODE	Size	Pack Qty
KPSF15	15mm Snap-Fit Clip	100
KPSF22	22mm Snap-Fit Clip	100



### 27. BLANKS

CODE	Size	Pack Qty
KPB10	10mm	50
KPB15	15mm	50
KPB22	22mm	50



# GPF PUSHFIT PLASTIC PLUMBING SYSTEM

Fittings & Accessories



## 28. GRAB RINGS

CODE	Size	Pack Qty
KPGR10	10mm	50
KPGR15	15mm	50
KPGR22	22mm	50

## 29. GPF STAND



Product/SIZE	Qty
STRAIGHT COUPLERS 15mm	120
STRAIGHT COUPLERS 22mm	60
ELBOW 15mm	100
ELBOW 22mm	50
TEE 15mm	80
TEE 22mm	30
STOP END 15mm	80
STOP END 22mm	30
STRAIGHT TAP CONNECTOR 15x1/2"	60
STRAIGHT TAP CONNECTOR 22x3/4"	30
BENT TAP CONNECTOR 15x1/2"	30
STRAIGHT REDUCER 22x15mm	30
REDUCING TEE 22x22x15mm	15
LEVER VALVES (BRASS) 15mm	15
APPLIANCE VALVE 15x3/4"	35
ISOLATING VALVE 15mm	45
PIPE INSERT 15mm	1050
PIPE INSERT 22mm	450
TOTAL FITTINGS	2310
KPSTAND	1



# GPF PUSHFIT PLASTIC PLUMBING SYSTEM

## Technical Information

Davant GPF is the grey, totally flexible plumbing system from Davant Products, the result of considerable investment in research and development. GPF is tailor made for the professional plumbing and heating installer who wants a high quality system that is simple to fit, durable in use, yet competitively priced.

### High level of specification

Manufactured in accordance with the highest European Quality Standards, including BS EN ISO 9002, the GPF polybutylene pipe and fittings system conforms to BS7291 Parts 1 and 2. Accordingly, the system holds the British Standard Institute Kitemark classification 'S'. The GPF polybutylene system is one of few systems on the market to have achieved this.

### Comprehensive range

The GPF PB system offers a comprehensive choice of pipe and fittings in 10mm, 15mm, 22mm and 28mm sizes, suitable for all hot and cold plumbing and central heating systems. It can be used in both sealed and open vented systems and has been designed to withstand constant pressure at high temperatures. The combination of low thermal conductivity and high corrosion resistance makes it ideal for use in central heating systems.

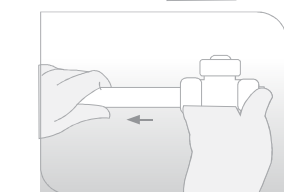
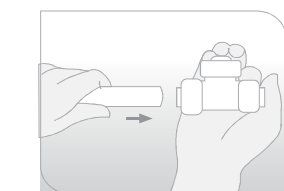
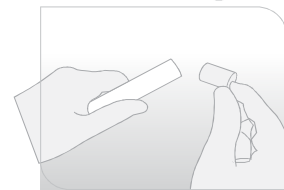
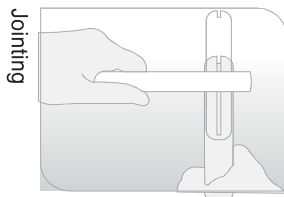
### Easy to handle and fit

The GPF polybutylene system offers the installer major advantages. The flexible nature of the pipe allows a cabling option, which speeds up pipework routing significantly. It will also cable through joists easily, thus dispensing with the time consuming task of pipe bending and joint compressing in confined areas. GPF PB piping is so flexible that it can be bent to 8 times its diameter without the need for a joint.

Few tools are needed to complete even the most complex pipework systems. Joints are push-fit for simplicity and speed of installation. Nothing could be more simple, cleaner or safer. Davant strongly recommends the use of lubricants which reduces installation time and ensures a perfect joint, first time, every time.

### Using GPF with other pipe and fittings

The GPF polybutylene system is extremely versatile and can be used with all metric sized copper pipe manufactured to BS2874 and compression fittings manufactured to BS864.



Use only purpose designed pipe cutters and cut the pipe squarely. Ensure the pipe is free from burrs and scratches.

Do not use a hacksaw.

Always use the correct pipe insert.

Ensure all cap nuts are hand tightened. Visually check the internal components. Make the correct insertion depth by observing the chevron markings on the pipe. Push the pipe firmly and horizontally into the fitting. A secure joint has been made when the correct insertion marking is reached.

After checking the correct insertion depth has been achieved, pull back on the pipe firmly to ensure the grab ring engages correctly.



# GPF PUSHFIT PLASTIC PLUMBING SYSTEM

## Technical Information

### Advantages and Physical Properties & Guidelines

- Applications
- Handling
- Storage
- Painting
- Cabling

### Installation Instructions

- Connecting to Metric Copper
- Connecting to Compression Fittings
- Connecting to Heating Appliances
- Bending the Pipe
- Clipping
- Laying in Concrete and Masonry
- System Testing
- Corrosion Inhibitors

### General Precautions

- Electric Installations
- Rodents
- Chlorine
- Gases, Fuels and Fuel Oils

### Installation Codes and Product Guidelines

- Product Guarantees
- Technical Helpline

### INTRODUCTION

#### Installation Codes and Product Guidelines

#### Product Guarantees

#### Technical Helpline

GPF PB offers you a complete and flexible plumbing and heating system manufactured in a BS EN ISO 9002 approved facility. GPF PB pipe and fittings are both manufactured from the same raw material, therefore offering uniform expansion and contraction, with an extensive range of both pipe and fittings available in 10, 15, 16, 20, 22, 25 & 28mm.

GPF PB fittings house an 'O' ring, spacer washer and grab ring and employ a simple push-fit technique for joining the fitting to the pipe. It is suitable for both sealed and open vented heating systems. With its low thermal conductivity and high resistance to corrosion, GPF PB offers you the ideal product for all domestic water supplies and central heating applications.

Manufactured to BS 7291 Part 1 and 2 Class S and awarded BSI Kitemark License No. KM52006 for Thermoplastic hot and cold pipe and fittings produced in polybutylene.

### AFFILIATIONS

The Institute of Plumbing, Scottish & Northern Ireland Plumbing Employers Federation

### CERTIFICATIONS

BS 7291 Part 1 and 2 Class S

BS EN ISO 9002 Registered Company

### ADVANTAGES

GPF PB offers you a quick and simple push-fit installation, with our "straight" coiled pipes of 50m and 100m eliminating the need for several joints on continuous runs. The flexible properties of polybutylene require fewer fittings to complete the job; installation time can be reduced by as much as 40%. The pipe is much easier to install than copper due to its flexibility, allowing the installer to cable through joists and around obstructions with ease, even the fittings can be rotated under pressure. Blowtorches, solders and tools are no longer required to make a watertight joint.

The high impact resistance of polybutylene, due to its flexible properties,

means that it is not easily damaged by impact or accidental crushing, resulting in less wastage.

GPF PB has higher heat retention than copper, (insulation is still recommended) resulting in pipes being cooler to the touch.

GPF PB pipes and fittings have low thermal conductivity which means that condensation on cold water pipes is greatly reduced having the added benefit of a higher resistance to the pipes freezing.

Using GPF PB pipe and fittings as opposed to copper results in less mechanical noise through the pipework, eliminating the hammer effect, thus, giving a much quieter operating system.

GPF PB pipe and fittings have little monetary scrap value keeping theft from the site of installation to a minimum.

GPF PB pipe and fittings are completely non-toxic offering the safest possible system to guard against water contamination.

TEMPERATURE	PRESSURE	PSI
20°C	12 Bar	174
65°C	6 Bar	87
82°C	3.5 Bar	51

Properties	Unit	Test Method	PF PB pipe
Melt Flow Rate	g/10min	ASTM D 1238	0.5
Density	G/cm	ASTM D 1505	0.920
Tensile Strength at Yield	Kg/cm <sup>3</sup>	ASTM D 638	175
Tensile Strength at Break	Kg/cm <sup>3</sup>	ASTM D 638	400
Elongation at Break	%	ASTM D 638	330
Tensile Modulus	Kg/cm <sup>3</sup>	JIS K 7113	4000
Izod Impact Strength	Kg/cm/cm	ASTM D 256	No Break
Shore Hardness	D Scale	ASTM D 2240	60
Melting Point	°C	DSC	127
Vicat Softening Point	°C	JIS K 7216	119
Brittleness Temp	°C	Test Method	-18 Lower than
Coefficient Of Expansion	Cm/cm/°C	ASTM D 696	1.3 x10 <sup>4</sup>
Thermal Conductivity	Kcal/mhr°C	ASTM C 177	0.33

### APPLICATIONS

GPF PB pipe and fittings offer excellent performance for long term pressure at high temperatures, coupled with its low thermal conductivity and high resistance to corrosion, making it the ideal product for central heating systems.

GPF PB pipe and fittings are also suitable for the installation of indirect and direct mains fed cold water services, vented and unvented hot water systems. GPF PB barrier pipe is highly recommended for use in Underfloor Heating Systems making the complete range of GPF PB pipe and fittings one of the most versatile products available to the plumbing installer to date.

GPF PB pipe and fittings can even be installed into caravans and boats where flexibility, low weight and resistance to freezing make them the most versatile products to use.

### HANDLING

Care should be taken when handling all polybutylene products especially

pipe, avoid dragging along the ground, rubbing against rough surfaces like walls and concrete floors which could reduce the wall thickness of the pipe. When feeding pipe through holes in brickwork and walls always cover the end of the pipe with tape to avoid debris entering the pipe, this will also help in avoiding damage to the joining surface. Care should also be taken to avoid crushing the pipe walls during bending and the wall of the pipe being punctured by sharp objects.

### STORAGE

GPF PB pipe and fittings should always be stored in their protective wrapper, away from sources of ultra violet light, for example direct sunlight. Where installation is unavoidable in areas of direct sunlight and sources of artificial ultra violet light always install the pipework into ducting. When storage of pipe is required for any length of time do not exceed 1.5metre stack heights for coils and 1 metre stack heights for straight lengths.

### PAINTING

GPF PB pipe and fittings can be painted using normal household paints; however solvent based products and cellulose paints should not be used. Surfaces to be painted should be free from all deposits of silicone and grease compounds.

When required, re-painting may be achieved by gently rubbing down with wet and dry using a grade no coarser than 400, hot air guns and chemical based paint strippers should never be used on any polybutylene products.

### CABLING

GPF PB pipes flexibility enables the installer to thread the pipe through concealed and inaccessible spaces with minimal or no disruption to the surrounding building resulting in major savings to installation time. The flexibility of GPF PB pipe means that pipework can be threaded through

dry wall systems, studded partitions and cabled through holes drilled into joists. There are restrictions as to where joists can be drilled and notched, these restrictions can be found in the Building Regulations Approved Document A and BS 6700: 1997.

As a general guide:

Holes in roof and floor joists should be no greater than 0.25 times the overall depth.

Holes drilled into the joist should be drilled at the neutral axis and should not be less than 3 diameters (centre to centre) apart.

Holes should be spaced between 0.25 and 0.4 times the span from the support.

Notches in roof and floor joists should be no deeper than 0.125 times the depth of the joist.

Notches in roof and floor joists should under no circumstance be cut any closer to the support than 0.07 of the span and no further away than 0.25 times the span.

### Installation Instructions

#### CONNECTING TO METRIC SIZE COPPER

GPF PB fittings are suitable for use with all metric sized copper tube manufactured to BS2871.

The copper tube should be cut using a plumber's pipe cutter, remove all sharp edges to avoid damaging the O-ring when inserting into the GPF PB fitting.

#### CONNECTING TO METRIC SIZE COMPRESSION FITTINGS

GPF PB pipe can be used with compression fittings manufactured to BS864. A GPF stainless steel insert must always be inserted into the GPF PB pipe before compressing the joint. The olive must be within the length of the support sleeve and PTFE tape over the olive will ensure a watertight seal is achieved.

#### CONNECTING TO A HEATING APPLIANCE

When connecting to any heating appliance you must ensure that at least 2 metres of copper pipe is firstly connected to the heating appliance on both the flow out and the return before connecting to GPF PB pipe. Care should be taken to ensure that the heating appliance has the appropriate thermostatic cut out controls to ensure that operating temperatures do not exceed the pressure and temperature limits for Class S thermoplastic pipe.

#### BENDING THE PIPE

PF PB pipe's immense flexibility enables the installer, by clipping the pipe into place, to cold form bends up to 8 times the pipes diameter, in many cases dispensing with the need to make elbow connections, again reducing installation time.

#### CLIPPING

GPF PB pipe as with all polybutylene pipe is not self supporting like copper, it is therefore recommended that polybutylene pipe be supported

NORMAL DIAMETER	HORIZONTAL RUNS	VERTICAL RUNS
10mm	0.3m	0.5m
15mm	0.3m	0.5m
16mm	0.4m	0.6m
20mm	0.5m	0.8m
22mm	0.5m	0.8m
25mm	0.5m	0.8m
28mm	0.8m	1.0m

### Installation Instructions

#### LAYING INTO CONCRETE AND MASONRY

GPF PB pipe and fittings can be laid into concrete and masonry provided that they are installed into conduit pipe and junction boxes.

This is to ensure that access to the pipe and fittings can take place should the need arise to carry out any maintenance.

Insulation is also recommended to protect against frost and heat loss. Please check recommendations as outlined in Byelaw 58.

#### SYSTEM TESTING

A full scale systems check should be carried out in accordance with BS6700: 1997 and Water Supply Regulations 1999.

When the installation is complete the system should be filled and flushed out, refill the system slowly to avoid any air locks.

GPF PB blanking caps and stop ends are particularly useful to plug all outlets prior to system testing taking place.

We recommend that the system be subjected to a hydraulic pressure test for 30 minutes at 10-bar minimum then reducing to 5-bar for a further 30 minutes. When testing be sure that pressures used do not exceed manufacturer's levels for boilers, cylinders and pumps.

Any drop off in pressure over this period should be investigated and any leakages within the system must be repaired or replaced.

### CORROSION INHIBITORS

It is recommended that a corrosion inhibitor be used at all times. GPF PB pipe and fittings are in no way affected by the anti-corrosion properties found in compounds such as Sentinel and Fernox.

All heating circuits should be protected by an appropriate inhibitor as oxygen may enter the system through a variety of points such as pumps, header tanks and valves.

GPF PB barrier pipe has the added advantage of an oxygen barrier incorporated into the pipe to greatly reduce the ingress of oxygen through the pipe wall.

It is therefore highly recommended that barrier pipe be used along with an inhibitor on all sealed heating systems.

### General Precautions

#### ELECTRICAL INSTALLATIONS

GPF PB pipe as with all plastic products is non-conductive and should not be used to provide an earth return.

Where GPF PB pipe is used to replace a section of existing copper pipe that was previously earthed, electrical continuity should be reinstated by affixing a section of earth cable between the ends of the copper pipe secured to the metal using clamps or clips. No requirements are however needed to bond the pipe work to earth on new installations where no metal pipe is installed. However all electrical requirements for heaters, cylinders and pumps etc. should be taken into account. If in any doubt consult a qualified electrician.

#### RODENTS

In this day and age it is highly unlikely for properties to be infested with rodents. However, if rodents are present in large numbers and no steps towards extermination have been carried out, it is possible that damage to electrical and plumbing materials, including

GPF PB, could occur.

#### CHLORINE

The GPF PB range of pipe and fittings are suitable for carrying normal levels of chlorine found in domestic water supply systems. It is however not suitable for carrying large quantities, for example, water circulation of swimming pools that use large concentrations of chlorine. Short-term exposure of chlorine used for disinfecting will have no adverse effect on the system provided the maximum permitted level of 5ppm is not exceeded.

#### GASES, FUEL AND FUEL OILS

GPF PB pipe and fittings are not suitable for the transportation of gases, steam and compressed air; it is also not suitable for the transportation of fuel oils including petroleum.

#### INSTALLATION CODES AND PRODUCT GUIDELINES

The guides and standards below should be followed during design and installation when using GPF PB pipe and fittings.

BS 6700:1997. Specification for design, installation, testing and maintenance of services supplying water for domestic use within buildings and their curtilages.

WSR:1999. Water Supply Regulations 1999.

WIA:1991. Water Industry Act 1991.

BS 5955 Part 8:1990. Specification for the installation of thermoplastic pipe and fittings for use in domestic hot and cold water services, and heating systems.

BS8000. Workmanship on building sites Part 15: 1990 code of practice for hot and cold water services.

The Institute of Plumbing's. - Plumbing Engineering Services Design Guide.

Guide to the use of plastic pipework. TR11, HVCA, 1992.

Mechanical and electrical standard specification for heating, hot and cold water installations for dwellings.

Published by the former PSA.

#### PRODUCT GUARANTEE

25 Year Product Guarantee.

GPF PB pipe and fittings are guaranteed for 25 years against defects in materials or manufacture from date of purchase.

This guarantee only applies if the system is installed to the recommendations within this Technical and Installation guide, and is used in a normal domestic operation.

#### TECHNICAL HELPLINE

For further information please contact our Technical Helpline on:

Tel. 01531 630068

Fax. 01531 636638

Email: info@davant.co.uk





# Choose your Carbery tank...



Large or small? Single skin or bunded? Slimline, vertical or horizontal? With such a wide choice of models, the only problem could be knowing which tank to choose.

## Our Item Number Description



OTSTGR0650ROFT		650L Single Skin Tank			
Nominal Capacity	Actual Capacity	Length	Width	Height	Diameter
611 Litres	643 Litres	1083mm	670mm	1174mm	NA



OTSTGR0900ROFT		00900L Tank Compact Single Skin			
Nominal Capacity	Actual Capacity	Length	Width	Height	Diameter
931 Litres	980 Litres	1750mm	670mm	1060mm	NA



OTSTGR1100ROFT		01100L Tank Single Skin			
Nominal Capacity	Actual Capacity	Length	Width	Height	Diameter
1115 Litres	1174 Litres	1750mm	670mm	1260mm	NA



OTSTGR1150HOFT		01150L Tank Green Single Skin			
Nominal Capacity	Actual Capacity	Length	Width	Height	Diameter
1125 Litres	1184 Litres	1720mm	1060mm	1020mm	NA



OTSTGR1350HOFT		01350L Tank Single Skin			
Nominal Capacity	Actual Capacity	Length	Width	Height	Diameter
1326 Litres	1396 Litres	1720mm	1170mm	1100mm	NA



OTSTGR1350VOFT		01350L Tank Green Single Skin Vertical			
Nominal Capacity	Actual Capacity	Length	Width	Height	Diameter
1309 Litres	1378 Litres	NA	NA	1245mm	1250mm



OTSTGR1550HOFT		01550L Tank Green Single Skin			
Nominal Capacity	Actual Capacity	Length	Width	Height	Diameter
1476 Litres	1554 Litres	1810mm	1240mm	1220mm	NA



OTSTGR2500HOFT		02500L Tank Green Single Skin			
Nominal Capacity	Actual Capacity	Length	Width	Height	Diameter
2348 Litres	2471 Litres	2045mm	1370mm	1340mm	NA



OTSTGR2500VOFT		02500L Tank Green Single Skin Vertical			
Nominal Capacity	Actual Capacity	Length	Width	Height	Diameter
2554 Litres	2668 Litres	NA	NA	1400mm	1630mm



OTBTGR0650R		650L Bunded Oil Tank			
Nominal Capacity	Actual Capacity	Length	Width	Height	Diameter
611 Litres	643 Litres	1200mm	750mm	1240mm	NA



OTBTGR0900R		980L Bunded Oil Tank Green Compact			
Nominal Capacity	Actual Capacity	Length	Width	Height	Diameter
931 Litres	980 Litres	1940mm	840mm	1390mm	NA



OTBTGR1000S		1000L Superslim Bunded Tank Green			
Nominal Capacity	Actual Capacity	Length	Width	Height	Diameter
1000 Litres	1053 Litres	1770mm	650mm	1590mm	NA

\*\$25 CARRIAGE CHARGE ON ALL OIL TANKS

Whilst every effort is made to deliver across England and Wales with a £25 carriage charge on all tanks and there will be certain occasions where the delivery will incur an additional cost of transport based on location and size of oil tank.



= Stock Item

\* £25 CARRIAGE CHARGE ON ALL OIL TANKS

**Our Item Number      Description**

<b>OTBTGR1100R</b>		<b>1100L Bunded Oil Tank</b>			
Nominal Capacity	Actual Capacity	Length	Width	Height	Diameter
1115 Litres	1174 Litres	1940mm	840mm	1390mm	NA



<b>OTBTGR1350H</b>		<b>1350L Bunded Oil Tank</b>			
Nominal Capacity	Actual Capacity	Length	Width	Height	Diameter
1326 Litres	1396 Litres	2020mm	1270mm	1200mm	NA



<b>OTBTGR1350V</b>		<b>1350L Bunded Oil Tank Vertical</b>			
Nominal Capacity	Actual Capacity	Length	Width	Height	Diameter
1309 Litres	1374 Litres	NA	NA	1570mm	1390mm



<b>OTBTGR2500H</b>		<b>2500L Bunded Oil Tank Green</b>			
Nominal Capacity	Actual Capacity	Length	Width	Height	Diameter
2219 Litres	2336 Litres	2400mm	1700mm	1480mm	NA



<b>OTBTGR2500V</b>		<b>2500L Bunded Oil Tank Green Vertical</b>			
Nominal Capacity	Actual Capacity	Length	Width	Height	Diameter
2554 Litres	2688 Litres	NA	NA	1900mm	1870mm



<b>OTFPGR1350V</b>		<b>1350L Fuel Point - Premium Vertical</b>				(APOLLO KITS NOT REQUIRED)
Nominal Capacity	Actual Capacity	Length	Width	Height	Diameter	
1309 Litres	1374 Litres	NA	NA	1570mm	1372mm	



<b>OTFPGR2500V</b>		<b>2500L Fuel Point - Premium Vertical</b>				(APOLLO KITS NOT REQUIRED)
Nominal Capacity	Actual Capacity	Length	Width	Height	Diameter	
2554 Litres	2688 Litres	NA	NA	1900mm	1870mm	



<b>OTFPGR1350VS</b>		<b>1350L Fuel Point - Standard Vertical</b>				(APOLLO KITS NOT REQUIRED)
Nominal Capacity	Actual Capacity	Length	Width	Height	Diameter	
1309 Litres	1374 Litres	NA	NA	1570mm	1372mm	



<b>OTFPGR2500VS</b>		<b>2500L Fuel Point - Standard Vertical</b>				(APOLLO KITS NOT REQUIRED)
Nominal Capacity	Actual Capacity	Length	Width	Height	Diameter	
2554 Litres	2688 Litres	NA	NA	1900mm	1870mm	



<b>OTPLUSPACK</b>	<b>OT Plus pack</b>	Everything required for a standard bottom outlet oil tank installation, reducer, isolation valve, filter, compression fittings, PTFE tape and liquid sealant.			
-------------------	---------------------	---	--	--	--



<b>OTULTRAPACK</b>	<b>OT Ultra pack</b>	The ever-popular Apollo Ultrasonic tank contents gauge, complete with tank fitting kit. To complete the installation, just connect the supply line.			
--------------------	----------------------	---	--	--	--



<b>OTSMARTPACK</b>	<b>OT Smart pack</b>	Apollo Smart heating oil energy monitor - monitors CO2 emissions, fuel consumption, energy costs and tank levels! Complete with tank fitting kit.			
--------------------	----------------------	---	--	--	--



# FUEL CADDY

## Lightweight portable polyethylene tank for AdBlue, Diesel and Petrol

Our Fuel Caddy provides easy transport of adBlue, diesel and petrol from the forecourt to your machine. The Fuel Caddy range builds upon the company's proven commitment to excellence and a manufacturing heritage, stretching back over 40 years. Since 1977 Carbery Plastics Limited has pioneered the development of premium quality, plastic fuel and liquid storage tanks. Today, Carbery tanks are the preferred choice of thousands of fuel distributors, heating oil technicians, architects and specifiers, who quite sensibly refuse to settle for a lesser brand. All Carbery products are manufactured in Ireland at the company's purpose built production facilities in Clonakilty, Co. Cork. Every Carbery tank benefits from being produced at a globally recognised centre of excellence for the design, development and manufacture of rotationally moulded products.



Petrol Diesel AdBlue

Standard Equipment
3M Hose & Delivery Nozzle
Rotary Hand Pump - 38l per 100 revolutions
2" BSP Threaded Breather Cap Fill Connection
1" Suction Connection

Specifications	
Capacity	55L
Width	460mm
Depth	295mm
Height	920mm

### FUEL CADDYS

TYPE	CODE	Capacity	Width	Depth	Height
DIESEL	OTFCD55	55L	460mm	295mm	920mm
ADBLUE	OTFCA55	55L	460mm	295mm	920mm
PETROL	OTFCP55	55L	460mm	295mm	920mm

### 55Litre Mobile Dispensing Caddy Diesel – Petrol/Gasoline –Adblue

The Carbery Fuel Caddy range, allows almost unlimited refuelling operations both in professional fields and in sport or leisure activities, ideal for the refuelling of small and light operating vehicles or crafts. Key features include;

- From tank to machine
- Solid wheels suitable for transport on any surface
- Manual Rotary pump for Diesel, AdBlue, Petrol
- Reinforcement ribs give great strength and resistance
- Top handle for easy gripping and lifting
- Non-spill vent plug
- Integrated breather cap.
- Wheels and foot support
- Front nozzle holder support

#### Benefits

The Carbery Plastics Fuel caddy is a fully mobile, portable diesel storage and dispensing solution, which minimises downtime, maximises productivity and eliminates the requirement for drums, cans and barrels on-site. Portability - Carbery Fuel Caddy fuel tanks can go where bowsers, barrels and tankers can't;

- Strong tough and durable, every Carbery Fuel Caddy is manufactured from a specialist polymer with excellent impact resistance characteristics;
- Manufactured from corrosion resistant materials, fuel Caddy will never rot, rust or corrode and are fully recyclable;
- Reduced risk of spillage when compared with jerry cans, cans and drums;
- Lightweight and easily handled, the Carbery Fuel Caddy cleverly fits within the load compartment of a commercial vehicle or passenger car;
- Manufactured within a ISO 9001 Manufacturing Environment.





# MOBI POINTS

# CARBERY MOBI POINT PORTABLE DIESEL DISPENSING TANKS



Carbery Mobi Points have been engineered especially for the safe, secure and environmentally responsible storage and dispensing of Diesel fuel. They simply strap to the back of a pickup truck, SUV or similar vehicle and allow fuel to be delivered and dispensed to on-site plant equipment.

Safer than old fashioned barrels and drums and more convenient than a bowser... every Mobi Point is manufactured from a specialist grade of medium density polyethylene, optimised for fuel resistance and durability. Subject to local environmental regulations, Mobi Points can also be used as static storage and dispensing tanks, though a suitably bunded area may be required.

MOBI POINTS				
TYPE	Capacity	Width	Depth	Height
DIESEL	220L	800mm	1150mm	495mm
ADBLUE	220L	800mm	1150mm	495mm
DIESEL	430L	800mm	1150mm	785mm
ADBLUE	430L	800mm	1150mm	785mm

## MOBI POINTS FROM CARBERY

Convenient, flexible, fuel tanks with 'go anywhere' capability.

Carbery Mobi Points are a new generation of Diesel storage tank. Designed to strap securely to the back of a pick up truck, Carbery Mobi Points can be refueled at any filling station and used to transport fuel directly to plant or equipment on-site.

Practical, flexible and affordable - Carbery Mobi Points are bristling with the latest fuel dispensing technology and engineered to ensure a long and useful service life. Supplied as standard with weatherproof lid, locking spigot, integrally moulded strap over points and 2 way fork lift access, they are lightweight, easily handled and easy to use.

A wide range of options is available, allowing Mobi Points to be personalised to operator specific requirements. They are also suitable for static use too..v. subject to local fuel storage and environmental requirements.

### Features:

- Choice of 12v or 24v 50lpm electric pump;
- 4m battery fly leads;
- 3/4" Fuel Dispensing Hose;
- Fuel dispensing nozzle with auto shut off;
- Lockable lid;
- Optional fuel contents gauge;
- Optional fuel flow meter;
- 2" vent;
- 2" BSP fill point;

### Benefits:

- Portability - Carbery Mobi Points can go where bowzers and tankers simply can't;
- Lightweight and easily handles, with 2-way FLT access;
- Strong, tough and durable;
- Manufactured from corrosion resistant materials, Mobi Point will never rot or rust;
- Reduced risk of spillage when compared with jerry cans, barrels and drums;
- Road legal - yet ideal for site use;
- Maximises productivity by minimising plant and equipment downtime

### Dimensions, Weights and Capacities

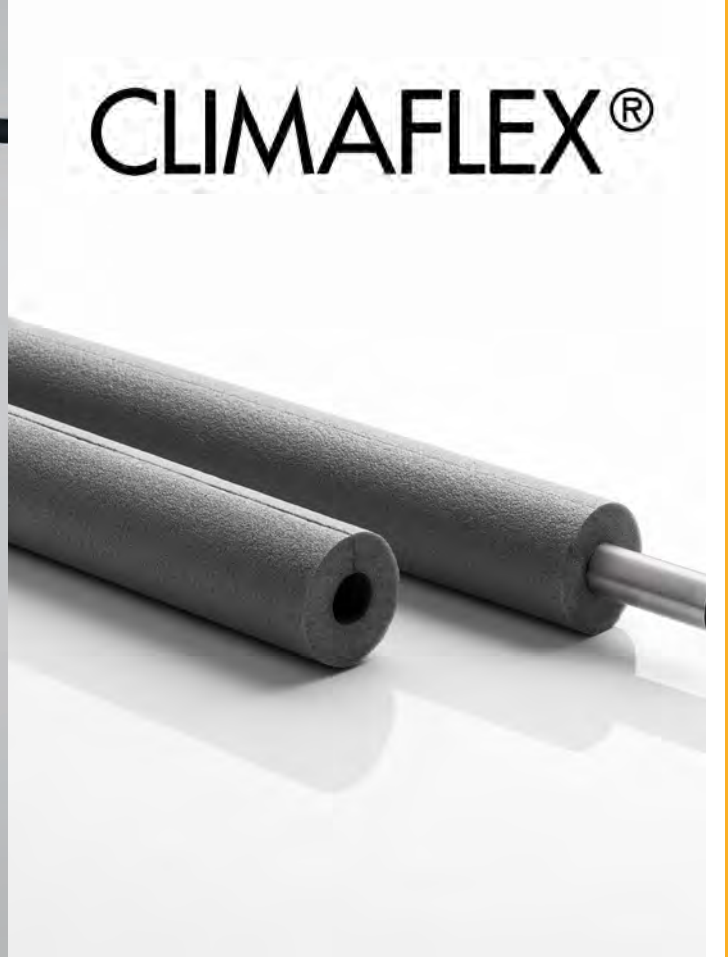
	220MP	430MP
Capacity:	220 litres	430 litres
Length:	1150mm	1150mm
Width:	800mm	800mm
Height:	495mm	785mm
Unladen Weight:	35KG	45KG
Laden Weight:	33KG	423KG

# DAVANT Agriculture

Rural life - coal bunkers, storage bunkers and composters.



Ask about our Davant Insulation range



# RURAL LIFE

**DAVANT** Agriculture

Rural life has a requirement for lots of unique products, from storing coal to chemicals and creating your own compost. Here we show our wider range of products that can help make everyday life that bit easier.



#### CARBERRY SLIMLINE 3 BAG BUNKER

CODE	Height (mm)	Length (mm)	Depth (mm)	Capacity
OTCBO3GR	890mm	580mm	610mm	c. 250 Litres/3 Bags



#### CARBERRY 6 BAG BUNKER

CODE	Height (mm)	Length (mm)	Depth (mm)	Capacity
OTCBO6GR	900mm	800mm	1000mm	c. 400 Litres/6 Bags



#### CARBERRY 12 BAG BUNKER

CODE	Height (mm)	Length (mm)	Depth (mm)	Capacity
OTCB12GR	1040mm	1000mm	1230mm	c. 850 Litres/12 Bags



#### CARBERRY BUNKER STAND

CODE	Height (mm)	Length (mm)	Depth (mm)	Capacity
OTCBS3B	470mm	600mm	620mm	3 Bags
OTCBS0406	470mm	1070mm	860mm	6 Bags



**Carberry's optional Bunker Stand allows fuel to be dispensed directly into a bucket or scuttle. Available with 3 and 6 bag models.**

**Just specify at time of order!**



## Much more than just a Coal Bunker!

Built stronger, to last longer... Carberry Bunkers have been used to store all kinds of solid fuel for over 3 decades. But as well as being ideal for solid fuel, Carberry Bunkers can also make great general purpose storage containers, at home, on the farm and in stores and workshops too! Upon request, each model in the range can also be supplied without a bottom discharge door, for storage of feed, solid fuel, granules, salt, sand and grit.

**DAVANT** Agriculture

### Chemical Bund Store

Providing safe agricultural & chemical storage

- Control possible chemical or hazardous spills
- Safely store chemicals, agricultural medicines & hazardous materials
- Manufactured from long-lasting, hard-wearing polyethylene
- Lockable, secure, safe storage of dangerous & hazardous chemicals
- Meets agricultural chemical storage requirements



#### CHEMICAL BUND STORE

Height (mm)	Length (mm)	Depth (mm)
990mm	1200mm	900mm

- **LOCKABLE**
- **MAINTENANCE FREE**
- **WEATHER RESISTANT**



### Multi Store Bunker

Providing secure garden & fuel storage

The Carbery Multi Store Bunker is ideal for storing D.I.Y. equipment and tools, gardening equipment and tools, wellington boots, and wet gear, children's bicycles and toys, pet and animal food, logs and wood, coal and charcoal, briquettes and kindling, gas barrels and much, much more!

### Carbery Plastics Chemical Bund Store / Multi Store Bunker

- Secure, sleek and multi-functional storage
- Manufactured from corrosion resistant materials, will never rot, rust or corrode
- Provides secure and dry storage
- Pre-assembled, lightweight and easily handled
- Large top opening door, with prop rod to allow safe access and safety chain to prevent over extension of door
- UV stabilised and proven in conditions as low as -20°C, Carbery Bunkers have been tested for decades in all weather conditions.

## Adblue Storage and Dispensing Tanks

Carbery AdBlue banded dispensing tanks are designed for the safe, secure and appropriate storage of AdBlue at agricultural, commercial and industrial premises. Every Carbery Blue Point combines the benefits of forecourt style AdBlue dispensing with the assurance of supply, which only on-site storage provides.

For complete peace of mind and reassurance, every Carbery Blue Point benefits from banded (i.e. tank within a tank) construction, thereby ensuring compliance with even the most demanding Irish, UK and EU environmental requirements.

### Benefits

- For ease of use, every Carbery Blue Point benefits too from a factory fitted AdBlue pump, delivery hose and automatic dispensing nozzle to ensure cleaner, safer fluid dispensing.
- Manufactured from premium quality UV stabilised, corrosion resistant polyethylene
- Manufactured to ISO standards
- Bulk Storage will allow larger volume purchases saving you both time and money
- 10-year warranty against manufacturing, material and design defect.



**1350 Blue Point**  
**OTBLFP1350**

**Diameter:** 1,372mm  
**Height:** 1,570mm  
**Capacity:** 1,309 litres



**2500 Blue Point**  
**OTBLFP2500**

**Diameter:** 1,870mm  
**Height:** 1,900mm  
**Capacity:** 2,554 litres

### All Carbery Blue Point Models are supplied as standard with:

- Lockable Cabinet;
- Suction Pipe c/w Strainer and Non-Return Valve
- PUMP 230v AC Adblue Pump
- 6 meter Delivery Hose
- Automatic Nozzle
- Digital Meter

### Optional Extras

- Apollo Wireless Contents Gauge;
- BMS-4-20ma BMS Output;
- Dry Break Connection

# Rural Life

## Roto Composter

### A SMARTER WAY TO MAKE YOUR OWN COMPOST

**Carbery's new Roto Composter isn't just a better way to produce your own compost, it's a smarter way to produce compost too.**

When developing Roto, we looked closely at what gardeners actually require. We eliminated the requirement for home assembly and we took care to design a product, which keeps rodents at bay. And by working closely with amateur gardeners, we engineered a product which doesn't just look good, but can produce great compost in as little as 6 weeks\*.



### WHY PRODUCE YOUR OWN COMPOST?



**Everyone knows that prepack compost is readily available. So why bother to produce your own?**

- It's natural and it's free;
- Household composting reduces the volume of waste sent to landfill;
- Ecologically, home composting is a better source of compost than natural peat based products;
- It returns essential nutrients to the soil, helps to condition your soil, increasing water retention;
- You control what goes into your compost mix and what doesn't;
- It usefully complements other soil enhancement measures and products.

**There are many reasons to choose a Carbery Roto Composter. Here are just a few:**

- Unique, castor based Roto action speeds up the composting process;
- Rodent resistant design;
- Simple, robust design, eliminates potentially troublesome hinges, gears or drives;
- Strong, tough and durable - yet lightweight and easily handled when unladen;
- Low maintenance - corrosion and rot resistant;
- Fully assembled - no home assembly required;
- Manufactured from fully recyclable materials;
- Available in black and green, a Carbery Roto is at home in almost any garden.



#### ROTO COMPASTER

CODE	Height	Depth	Width	Volume	Weight
OTRC200	620mm	850mm	780mm	200 litres	9 kgs



## TOP 10 TIPS FOR GREAT GARDEN COMPOST!

Great compost depends on getting the balance right between brown and green ingredients. Try and use equal volumes of both. **Red ingredients MUST NEVER be added to your composter.**

Green	Brown	Red
Untreated weeds*	Waste card and paper	Meat
Grass cuttings	Hedge clippings	Fish
Raw vegetables and peelings	Wood prunings and shavings	Cooked foods
Tea leaves and bags	Old plants	Oils and fats
Coffee grinds	Leaves	Animal litter
Plant prunings	Crushed egg shells	Animal faeces

\* Weeds should be untreated and free of seed

1. Place the composter in a sunny position;
2. Start off with grass cuttings or untreated weeds, to activate the composting process.
3. Add green and brown items as they become available. Try and use an equal volume of both.
4. If you've more green than brown items, consider bulking out with waste card and paper.
5. Larger items should be cut up;
6. Rotate your composter gently every few days;
7. When full, do not add further items but
8. Continue to rotate the composter
9. The composting action will continue and you can have ready to use compost in as little as 6 weeks\*.
10. When the compost is crumbly and turned a dark brown colour, it's compost is ready to use.



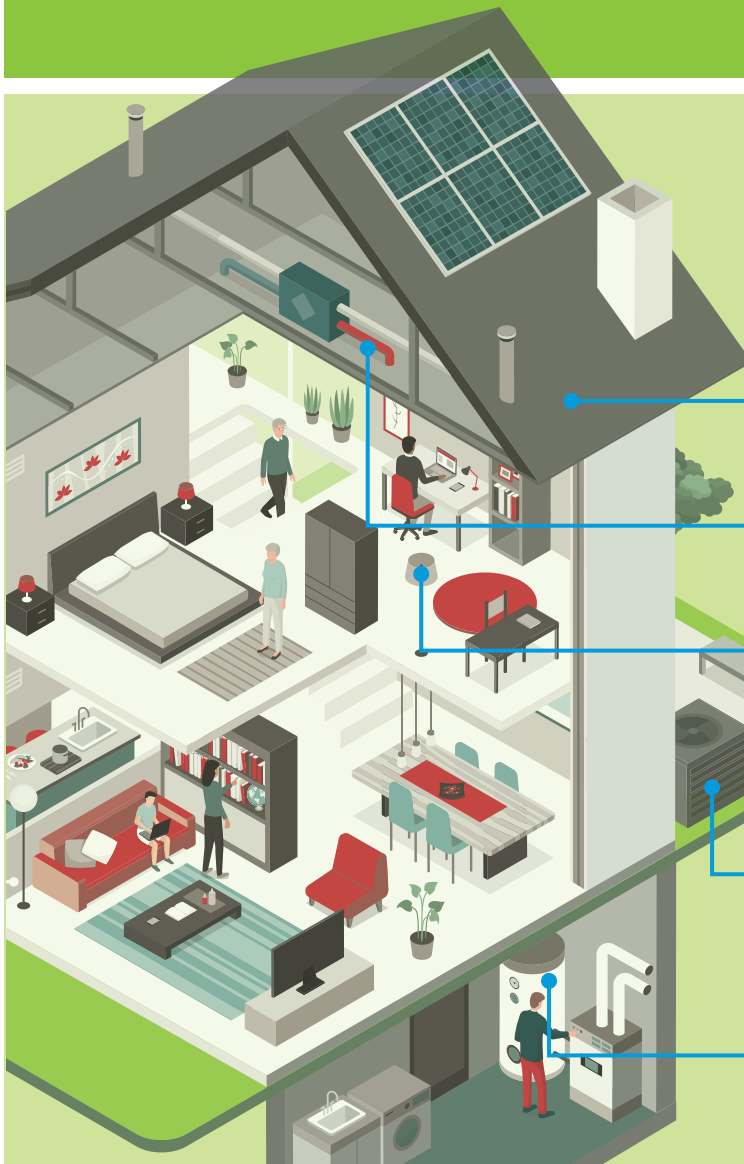
**IMPORTANT INFORMATION:** All information contained herein is understood to be correct at time of publication. However consistent with Carbery Plastics Limited's commitment to continual product improvement, the right is reserved to amend product specifications without notice. Carbery Plastics and the stylized C device are trademarks of Carbery Plastics Limited. All rights reserved 2013 and and all content contained herein may not be reproduced without the prior permission of Carbery Plastics Limited. Printed and published by Carbery Plastics Limited Clonakilty Enterprise Park Clogheen Clonakilty Co. Cork Ireland.

\*6 week period stated is minimum time from last content addition. Actual time will vary according to content, external temperature, location and sunlight.

OFFSET THE ENERGY CRISIS







# Domestic insulation

Insulating the sanitary and heating pipework of your home can significantly improve its energy efficiency by reducing heat loss, energy consumption and associated expenditures.



Here is a comparison of the costs and returns on an investment in your home's energy efficiency.

Cost of installation  
Annual savings

	<b>£16</b> <b>£12</b>	Roof insulation
	<b>£15</b> <b>£9</b>	Pipework insulation
	<b>£160</b> <b>£65</b>	Replace all bulbs with LEDs
Air-source heat pump replacing either:		
	<b>£10000</b> <b>£395</b>	Old G-rated gas boiler
	<b>£10000</b> <b>£105</b>	Oil boiler
	<b>£160</b> <b>£65</b>	Hot water tank jacket top up (25-60 mm)

\*Figures calculated and correct as of Jan 2023

With our Insulation product ranges designed for domestic applications, you can take proactive measures against the global energy price hikes.

Small changes to a building's thermal and acoustic insulation can boost personal health and well-being, your daily comfort and last, but not least, your protection from smoke in the case of fire.



## NOTES

A series of horizontal dotted lines for writing notes.



Davant is the largest distributor of pipe insulation in to the building, plumbing & heating merchant sector.

The vast majority of deliveries in to the independant merchant sector are delivered on our own fleet of vehicles specialising in 'ugly' freight.



Davant offers a barcoded 'traceable' logistics service to our customers. All product is picked up from an electronic warehouse location.



2023 is predicted to show continued growth of our exclusive ranges of Nitrile Pipe Insulation.

Class O Pipe Insulation for your commercial specification jobs, offering exceptional value and the highest quality in the industry.



# CREDIT APPLICATION FORM



## CREDIT APPLICATION FORM

Full Company Name					
Trading Name					
Address					
Address				Postcode	
Telephone:		Fax:		Mobile:	
Email for <b>Invoices</b>		Email for <b>Statements</b>		Email for <b>Sales Confirmation</b>	
Website Address					
Accounts payable contact name					
Buying Society/Group:	<input type="checkbox"/> IBC <input type="checkbox"/> IPG <input type="checkbox"/> FORTIS <input type="checkbox"/> H&B <input type="checkbox"/> NBG <input type="checkbox"/> PHG <input type="checkbox"/> UKPS <input type="checkbox"/> IBMG <input type="checkbox"/> <small>(Please tick as applicable and confirm membership number)</small>			Member number:	
NMBS MEMBERS ONLY	NMBS No.:				

Registered Office					
If Limited Company					
Registration Number				Years in Business	
Name of directors/partners/sole trader					
Bankers Name and Address					
Sort Code			Account Number		

### Trade Reference 1:

Full Company Name				Trading Name	
Trading Address					
Post Code		Telephone		Fax	
Email					

### Trade Reference 2:

Full Company Name				Trading Name	
Trading Address					
Post Code		Telephone		Fax	
Email					

I have read the Linthwaite Limited conditions of sale.

I apply to open a credit account with Linthwaite Limited and agree to abide by your conditions of sale.

Full name:

Signed		Date	
--------	--	------	--

Please attach a copy of your company's letterhead to this form.

Credit Limit Requested (£)	
----------------------------	--

Linthwaite Limited, Units 9-11, Lower Road Trading Estate, Ledbury, Herefordshire, HR8 2DJ  
 T: 01531 630068 F: 01531 636627 E: info@davant.co.uk W: www.davant.co.uk

# CONDITIONS OF SALE



## CONDITIONS OF SALE

1. Unless otherwise expressly agreed in writing by the Seller, these Conditions shall override any Terms or Conditions stipulated, incorporated or referred to by the Buyer, and except as herein provided, all guarantees, warranties or conditions whether express or implied by statute law or otherwise are excluded and hereby negated.
2. Unless otherwise specified in writing by the Seller, quotations given, and orders accepted are subject without notice to alterations in the Seller's tariffs published before dispatch.
3. Unless otherwise specified by the Seller, payment is due on or before the last day of the month next following the month in which dispatch is made.
4. (a) Any time given or accepted by the Seller for dispatch although given in good faith, is given or accepted on the basis of being an estimate only, and if from any cause delivery is delayed, the Seller will not be responsible for any loss or damage thereby caused to the Buyer.  
(b) Where delivery is to be made by instalments, each delivery shall be deemed for such purpose to be the subject of a separate contract and any failure whatsoever by the Seller in respect of any one delivery shall not entitle the Buyer to repudiate the Order or any instalments remaining to be delivered thereunder.  
(c) If for any reason the Buyer is unable to accept delivery of the goods at the time when the goods are due and ready for delivery, the Seller will, if its storage facilities so permit, store the goods until actual delivery and the Buyer shall be liable to the Seller for the reasonable costs of such storage, including any insurance or additional handling and transport costs. This provision shall be in addition to and not in substitution of any other payment or damages for which the Buyer may become liable due to his failure to take delivery at the appropriate date.
5. In no circumstances will the Company be responsible for loss of profits, incidental expenses or any consequential loss attributable to defects in material or delay in, or non-delivery.
6. Unless the Company shall give any written guarantee or warranty in respect of or in connection with a particular product, it is hereby expressly stated that the Company gives no guarantee or warranty (whether express or implied) as to either the life or wear of the Goods or as to the suitability of its Goods for any specific purpose, even if that purpose is known to the Company, and it will accept no responsibility for any loss, damage or injury whatsoever arising directly or indirectly from use, application or storage of such goods.
7. Notwithstanding delivery and the passing of risk in the Goods, or any other provisions of these Conditions, the property in the Goods shall not pass to the Buyer until the Seller has received in cash or cleared funds payment in full for the price of the Goods and all other Goods agreed to be sold by the Seller to the Buyer for which payment is then due.
8. The Buyer shall within 14 days after delivery of the Goods give notice in writing to the Seller whether he rejects them or whether he accepts them. If he gives notice that he rejects the Goods and such rejection shall afterwards become ineffectual by reason of the Buyer dealing with the goods as owner, or by reason of any other conduct on the part of the Buyer inconsistent with such rejection, the Buyer shall be bound to pay the purchase money therefore in full and shall have no claim to damages or compensation by reason of any variation or non-conformity of the Goods with the contract **in the event of seller accepting these conditions**. Shortages, damages or discrepancies need to be reported **within 14 days of delivery date** to enable us to consider replacement or credit.
9. Once Oil Tanks have been delivered and signed for – liability passes to the consumer. As such then Carbery Oil tanks are **excluded from the 14-day** reporting window relevant to other DAVANT products.
10. Non-returnable products include Tuffcoat, K-Rock, Bespoke tank / Cylinder jackets / Ceiling pads, Phenolic Pipe Insulation, together with any other non-stock line
11. If Collection is required for any product(s) – we reserve the right to a 20% restocking fee and a collection fee.
12. If the Buyer makes default in any payment or commits any breach of the Terms and Conditions of the Order, or suffers distress or execution, or becomes insolvent or commits any act of bankruptcy, or enters into any arrangement or composition with his creditors, or goes or is put into liquidation (other than solely for amalgamation or reconstruction) or if a Receiver is appointed over any part of the Buyer's business, the Seller may without prejudice to any rights which may have accrued or which may accrue to it, as its option (i) require payment in advance for all or any deliveries; or (ii) suspend any further deliveries until such default or breach is rectified; or (iii) cancel or procure cancellation of any other orders which the Buyer has placed with the Seller or any associated company of the Seller, so far as any goods remain to be delivered thereunder.
13. The construction validity and performance of any contract to which these Conditions are subject shall be governed by the Laws of England and all disputes which may arise out of or in connection with any such contract or the meaning or effect of the terms hereof shall be settled by arbitration in England in accordance with the provisions of the Arbitration Act of 1950 or any statutory modification thereof for the time being in force.
14. At the end of its working life, product should be disposed of in accordance with statutory and regulatory requirements in force at that time.
15. The trading companies within Linthwaite Ltd do not trade on a sale or return basis under any circumstances.
16. The trading companies within Linthwaite Ltd reserve the right to a re-stocking charge.



Built on Relationships

# EXTERNAL SALES TEAM AREA MAP

## AREA KEY CONTACTS

**Craig Shipton - North West**  
**Regional Sales Manager**  
07776 593 084  
craig.shipton@davant.co.uk

**Dave Stackhouse - Midlands**  
**Regional Sales Manager**  
07557 560 148  
david.stackhouse@davant.co.uk

**Roger Brodie - South East**  
**Regional Sales Manager**  
07973 381 516  
roger@mathewbros.co.uk

**Lee Espley - U.K (National)**  
**Sales & Marketing Director**  
07917 892 695  
lee.espley@davant.co.uk

